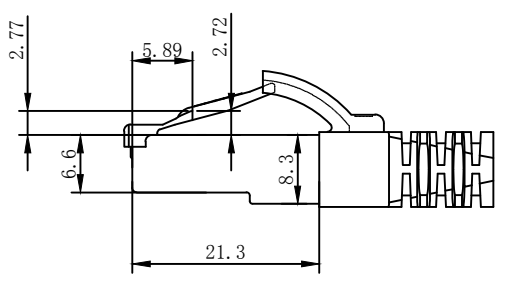
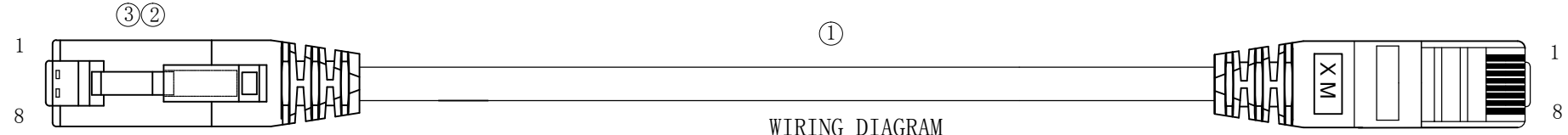
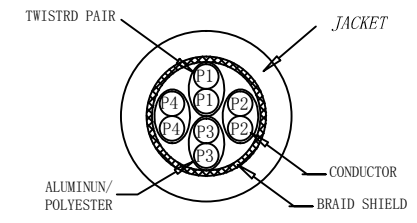
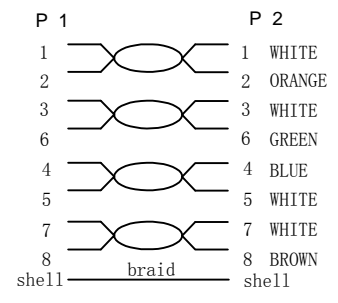


CAT. 6A S/FTP 26AWG LSZH TPE 500MHz ISO/IEC 11801 Class Ea Channel Link 100% tested & EN 50173-1 & ANSI/TIA-568-C.2 UL-E258106 www.Synergy21.de **CE**



WIRING DIAGRAM



NOTE:

1. ELECTRICAL TEST:
 - (1). 100% OPEN SHORT, MISS WIRE TEST
 - (2). INSULATION RESISTANCE:DC 300V 10M Ohm;
 - (3). CONDUCTOR RESISTANCE:3Ω Max (More than 3m, add one ohm per meter) ;
2. FLUKE TEST LIMIT:ISO11801 Channel Class EA
3. Working temperature:-10°C ~ + 60°C
4. Storage temperature:-20°C~+75°C
5. ROHS2.0 AND REACH COMPLIANT
6. Support PoE+ per IEEE 802.3at, Max to 30 Watt
7. TPE LSZH:Non fire retardant (Conform IEC60754-2、IEC 61034)
8. Packing:Synergy21 PE Bag+Label
9. Minimum of the bending radius is 60mm

MATERIAL LIST:

③	OVER MOLD	PVC 75A	2PCS	
②	PLUG	POLYCARBONATE RJ45 8P8C PIN GOLD PLATED 3U", LONG BODY, TRANSPARENT BLUE	2PCS	
①	CABLE	S/FTP CAT. 6A (26AWG BC*1P+AL-FOIL)*4PAIR+Braid AL-MG+ JACKET:TPE LSZH, OD:6.0±0.2MM	1PCS	
NO.	PARTS NAME	SPECIFICATION STANDARD	QT' Y	REMARK

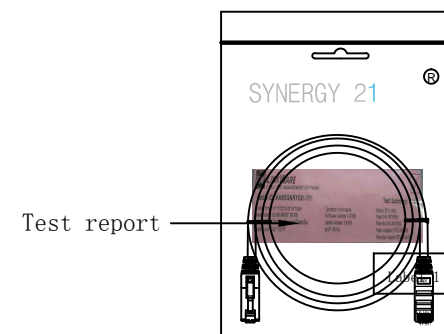
		Increase the minimum bend radius	2018-11-30	A4
		Delate label on the cable & Change Spary Word	2018-09-05	A3
		CHANGE PACKING AND BOX MARK	2018-03-12	A2
		Add UL information in spray word	2017-03-31	A1
BY	CHK	REVISION RECORD MODIFICATIONS	DATE	REV.

SYNERGY 21					
CUSTOMER				ITEM NO.	See The Chart
PRODUCT NAME	CAT. 6A S/FTP PATCH CORD TPE LSZH	manufacture country:	CHINA	UNIT	MM
DRAWNBY	CHECKBY	APPROVE	DATE		
SYNERGY 21	SYNERGY 21	SYNERGY 21	2016-01-05		

Chart:

COLOR:WHITE		
ITEM	LENGTH	PACKING
S216797	150±10	SYNERGY 21 A Bag
S216800	250±10	SYNERGY 21 A Bag
S216801	500±15	SYNERGY 21 A Bag
S216802	1000±20	SYNERGY 21 B Bag
S216803	1500±30	SYNERGY 21 B Bag
S216804	2000±30	SYNERGY 21 B Bag
S216805	3000±50	SYNERGY 21 B Bag
S216806	5000±100	SYNERGY 21 B Bag
S216807	7500±200	SYNERGY 21 B Bag
S216808	10000±200	SYNERGY 21 C Bag
S216809	15000±300	SYNERGY 21 C Bag

COLOR:BLACK PANTONE BLACK 3C		
ITEM	LENGTH	PACKING
S216829	150±10	SYNERGY 21 A Bag
S216810	250±10	SYNERGY 21 A Bag
S216811	500±15	SYNERGY 21 A Bag
S216812	1000±20	SYNERGY 21 B Bag
S216813	1500±30	SYNERGY 21 B Bag
S216814	2000±30	SYNERGY 21 B Bag
S216815	3000±50	SYNERGY 21 B Bag
S216816	5000±100	SYNERGY 21 B Bag
S216417	7500±200	SYNERGY 21 B Bag
S216818	10000±200	SYNERGY 21 C Bag
S216819	15000±300	SYNERGY 21 C Bag



SYNERGY 21										
					CUSTOMER		ITEM NO.	See The Chart		
ARVIN		ADD 0.15M	2016-10-25	A1	PRODUCT NAME	CAT. 6A S/FTP PATCH CORD TPE LSZH	manufacture country:	CHINA	UNIT	MM
		NEW	2016-01-05	A	DRAWNBY	CHECKBY	APPROVE	DATE		
BY	CHK	REVISION RECORD MODIFICATIONS	DATE	REV.	SYNERGY 21	SYNERGY 21	SYNERGY 21	2016-01-05		