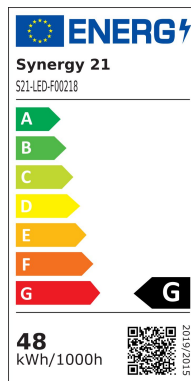
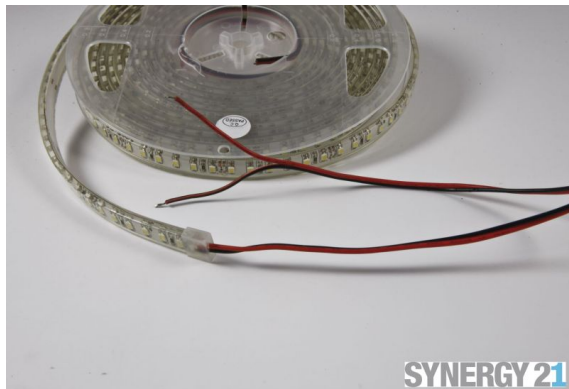


Synergy 21 LED Flex Strip 140 WW DC24V 48W IP62 CRI>90



| | |
|----------------------------|------------|
| kwh/1000h: | 48,00 |
| Lumens: | 3500 |
| Watt: | 48,0 |
| Nominal Service Life: | 35000 Std. |
| Switching Cycles: | 50000 |
| Opt. Ambient Temperature.: | 25 °C |



Synergy 21 LED Flex Strip SMD2835 series

Length: 5m
 Voltage: 24V,
 Watt: 9,6W/m, 48W
 Light colour: warm white, 3000K, CRI>90
 Brightness: 700lm/m, total: 3500lm
 Beam angle: 120°
 Protection class: IP62
 Number of LEDs: 140*2835HX/m, total: 700LEDs
 Dimensions: 5000*8*5 mm
 PCB colour: white, open cable end red black (150±5mm)
 Working temperature: -25°C to +40°C
 Can be shortened every 6 LEDs 5cm
 Adhesive tape: yes 3M on the back

Energy efficiency class: A
 kWh/1000h: 48

Strip can be shortened at the cut marks with sharp scissors.
 !Attention! Strip must be checked for functionality beforehand.
 Only split the strip when there is no current.

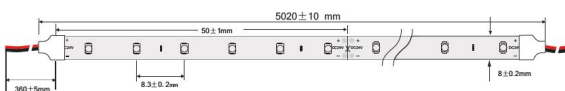
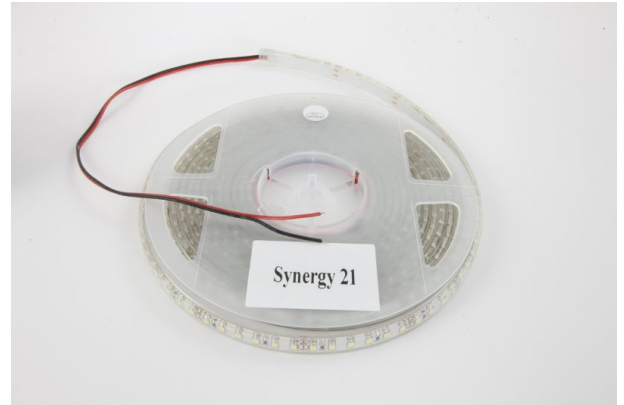
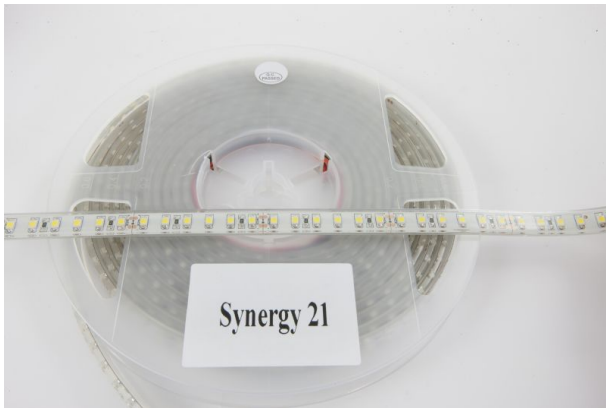
Our 3M adhesive tape adheres well, but should only be used as a mounting aid.
 There are a variety of mounting options, such as clips, permanently elastic mounting adhesive, cable ties, etc.

Please note that LED strips must also be cooled.
Make sure that the LED strip does not exceed a working temperature of 40°C, otherwise its service life cannot be guaranteed.
No guarantee can be given for overheated LED strips.

Attributes

| Attribute | Value |
|-----------------------|-----------------------|
| Abstrahlwinkel: | 120 |
| Ampere: | 2 |
| CC oder CV: | CV |
| CRI: | >90 |
| Dimmbar: | abhängig vom Netzteil |
| LED Strip Klebeband: | ja |
| LED Strip Breite: | 10.40 |
| LED Strip Höhe: | 5 |
| LED Strip Klebeband: | ja |
| LED Strip kürzbar: | 50 |
| LED Strip Länge: | 5000 |
| Lichtfabe in Kelvin: | 3000 |
| Lichtfarbe: | warmweiß |
| Lichtfarbe in Kelvin: | 3000 |
| Lichtfarbe Name: | warmweiß |
| Lumen: | 3500 |
| Schutzklasse: | IP62 |
| Volt: | 24 |
| Weight: | 0.2 Kg |
| Warranty: | 24.00 Months |

Additional Images





Accessories

| Part No. | Name |
|----------|--|
| 81069 | Synergy 21 LED zub Hollow Socket with Screw Terminals |
| 81068 | Synergy 21 LED zub wooden plug with screw terminals |
| 81741 | Synergy 21 LED Flex Strip add. Silicone mounting clip 10 pack |
| 93682 | Mean Well Power Supply - 24V 150W Dimmable IP65 |
| 93680 | Mean Well power supply - 24V 80W dimmable IP65 |
| 174654 | Synergy 21 LED FLEX-Streifen zub. Easy Connect I Form für 1 Linie klar |

| Part No. | Name |
|----------|---|
| 174653 | Synergy 21 LED FLEX Strip add. Easy Connect I Form for 1 line red |
| 174656 | Synergy 21 LED FLEX Strip zub. Easy Connect I Form für 2 Linie klar |
| 174655 | Synergy 21 LED FLEX Strip zub. Easy Connect I shape for 2 line red |
| 174648 | Synergy 21 LED FLEX-Strips add. Easy Connect T-shape for 1 line clear |
| 174650 | Synergy 21 LED FLEX-Streifen zub. Easy Connect T-Form für 1 Linie klar |
| 174647 | Synergy 21 LED FLEX Strip zub. Easy Connect T-Form für 1 Linie rot |
| 174649 | Synergy 21 LED FLEX Strip zub. Easy Connect T-Form für 1 Linie rot |
| 174652 | Synergy 21 LED FLEX-Streifen zub. Easy Connect T-Form für 2 Linien klar |
| 174651 | Synergy 21 LED FLEX Strip add. Easy Connect T-shape for 2 lines red |
| 174637 | Synergy 21 LED FLEX-Strips add. Easy Connect strip to strip connection 10/12mm IP67 |
| 174633 | Synergy 21 LED FLEX strips add. Simple connection of strips to cable 10/12mm IP67 |