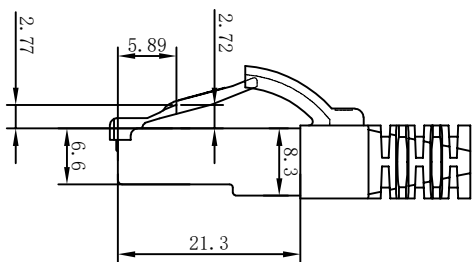
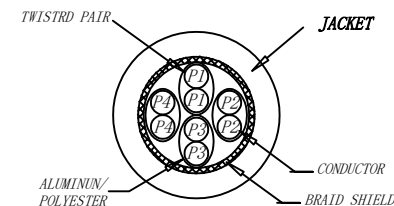
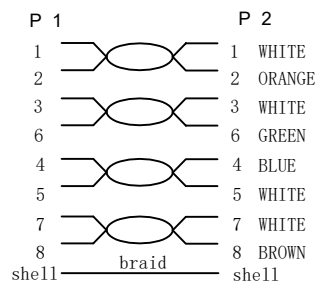


3P Certified CAT.6A/Class Ea S/FTP 26AWG LSZH TPE 500MHz ISO/IEC 11801 Class Ea Channel Link 100% tested & EN 50173-1 & ANSI/TIA-568-C.2 www.Synergy21.de **CE**



WIRING DIAGRAM



NOTE:

1. ELECTRICAL TEST:

- (1). 100% OPEN SHORT, MISS WIRE TEST
- (2). INSULATION RESISTANCE:DC 300V 10M Ohm;
- (3). CONTACTOR RESISTANCE:1 OHM per meter

2. FLUKE TEST LIMIT:ISO11801 Channel Class Ea

3. Operating temperature:-20°C ~ + 75°C

4. ROHS 3.0 AND REACH COMPLIANT

5. Support PoE/PoE+/PoE++

6. Packing:Synergy21 PE Bag+Label

7. Minimum of the bending radius is 60mm

8. Halogen free(IEC 60754-2)

Low smoke (IEC 61034)

MATERIAL LIST:

| | | | | |
|-----|------------|---|-------|--------|
| ③ | OVER MOLD | PVC 75A | 2PCS | |
| ② | PLUG | POLYCARBONATE RJ45 8P8C PIN GOLD PLATED 3U", LONG BODY, TRANSPARENT BLUE | 2PCS | |
| ① | CABLE | S/FTP CAT.6A (26AWG BC*1P+AL-FOIL)*4PAIR+Braid AL-MG+ JACKET:Super Flex TPE, OD:6.0±0.2MM | 1PCS | |
| NO. | PARTS NAME | SPECIFICATION STANDARD | QT' Y | REMARK |

| | | | | | |
|-------------------|-----------------------------------|----------------------|------------|------------|---------------|
| SYNERGY 21 | | | | | |
| CUSTOMER | | | | ITEM NO. | See The Chart |
| PRODUCT NAME | CAT.6A S/FTP 26awg PATCH CORD TPE | manufacture country: | CHINA | UNIT | MM |
| DRAWNBY | CHECKBY | APPROVE | DATE | | |
| BY | CHK | SYNERGY 21 | SYNERGY 21 | SYNERGY 21 | 2019-03-19 |

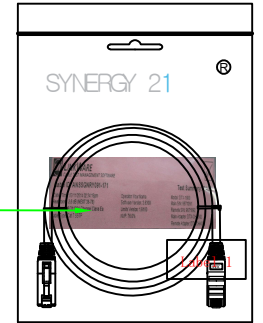
| | | | | | |
|-------|--|---------------------------------|--|------------|------|
| | | | | | |
| | | | | | |
| Hasia | | change "ROSH 2.0" to "ROSH 3.0" | | 2022-02-25 | A1 |
| | | NEW | | 2019-03-19 | A |
| BY | | CHK | | DATE | REV. |
| | | REVISION RECORD MODIFICATIONS | | | |

Chart:

| COLOR:YELLOW PANTONE 135C | | |
|---------------------------|-----------|------------------|
| ITEM | LENGTH/mm | PACKING |
| S217232 | 150±10 | SYNERGY 21 A Bag |
| S217233 | 250±10 | SYNERGY 21 A Bag |
| S217234 | 500±15 | SYNERGY 21 A Bag |
| S217235 | 1000±30 | SYNERGY 21 A Bag |
| S217236 | 1500±30 | SYNERGY 21 A Bag |
| S217237 | 2000±30 | SYNERGY 21 A Bag |
| S217238 | 3000±50 | SYNERGY 21 A Bag |
| S217239 | 5000±200 | SYNERGY 21 B Bag |
| S217240 | 7500±200 | SYNERGY 21 B Bag |
| S217241 | 10000±200 | SYNERGY 21 B Bag |
| S217242 | 15000±300 | SYNERGY 21 C Bag |

| COLOR:BLUE PANTONE 647C | | |
|-------------------------|-----------|------------------|
| ITEM | LENGTH/mm | PACKING |
| S217221 | 150±10 | SYNERGY 21 A Bag |
| S217222 | 250±10 | SYNERGY 21 A Bag |
| S217223 | 500±15 | SYNERGY 21 A Bag |
| S217224 | 1000±30 | SYNERGY 21 A Bag |
| S217225 | 1500±30 | SYNERGY 21 A Bag |
| S217226 | 2000±30 | SYNERGY 21 A Bag |
| S217227 | 3000±50 | SYNERGY 21 A Bag |
| S217228 | 5000±200 | SYNERGY 21 B Bag |
| S217229 | 7500±200 | SYNERGY 21 B Bag |
| S217230 | 10000±200 | SYNERGY 21 B Bag |
| S217231 | 15000±300 | SYNERGY 21 C Bag |

| COLOR:GREY RAL 7035 | | |
|---------------------|-----------|------------------|
| ITEM | LENGTH/mm | PACKING |
| S217210 | 150±10 | SYNERGY 21 A Bag |
| S217211 | 250±10 | SYNERGY 21 A Bag |
| S217212 | 500±15 | SYNERGY 21 A Bag |
| S217213 | 1000±30 | SYNERGY 21 A Bag |
| S217214 | 1500±30 | SYNERGY 21 A Bag |
| S217215 | 2000±30 | SYNERGY 21 A Bag |
| S217216 | 3000±50 | SYNERGY 21 A Bag |
| S217217 | 5000±200 | SYNERGY 21 B Bag |
| S217218 | 7500±200 | SYNERGY 21 B Bag |
| S217219 | 10000±200 | SYNERGY 21 B Bag |
| S217220 | 15000±300 | SYNERGY 21 C Bag |



| COLOR:ORANGE PANTONE 1575C | | |
|----------------------------|-----------|------------------|
| ITEM | LENGTH/mm | PACKING |
| S217254 | 150±10 | SYNERGY 21 A Bag |
| S217255 | 250±10 | SYNERGY 21 A Bag |
| S217256 | 500±15 | SYNERGY 21 A Bag |
| S217257 | 1000±30 | SYNERGY 21 A Bag |
| S217258 | 1500±30 | SYNERGY 21 A Bag |
| S217259 | 2000±30 | SYNERGY 21 A Bag |
| S217260 | 3000±50 | SYNERGY 21 A Bag |
| S217261 | 5000±200 | SYNERGY 21 B Bag |
| S217262 | 7500±200 | SYNERGY 21 B Bag |
| S217263 | 10000±200 | SYNERGY 21 B Bag |
| S217264 | 15000±300 | SYNERGY 21 C Bag |

| COLOR:GREEN PANTONE 3278C | | |
|---------------------------|-----------|------------------|
| ITEM | LENGTH/mm | PACKING |
| S217243 | 150±10 | SYNERGY 21 A Bag |
| S217244 | 250±10 | SYNERGY 21 A Bag |
| S217245 | 500±15 | SYNERGY 21 A Bag |
| S217246 | 1000±30 | SYNERGY 21 A Bag |
| S217247 | 1500±30 | SYNERGY 21 A Bag |
| S217248 | 2000±30 | SYNERGY 21 A Bag |
| S217249 | 3000±50 | SYNERGY 21 A Bag |
| S217250 | 5000±200 | SYNERGY 21 B Bag |
| S217251 | 7500±200 | SYNERGY 21 B Bag |
| S217252 | 10000±200 | SYNERGY 21 B Bag |
| S217253 | 15000±300 | SYNERGY 21 C Bag |

| COLOR:WHITE | | |
|-------------|-----------|------------------|
| ITEM | LENGTH | PACKING |
| S216797 | 150±10 | SYNERGY 21 A Bag |
| S216800 | 250±10 | SYNERGY 21 A Bag |
| S216801 | 500±15 | SYNERGY 21 A Bag |
| S216802 | 1000±20 | SYNERGY 21 A Bag |
| S216803 | 1500±30 | SYNERGY 21 A Bag |
| S216804 | 2000±30 | SYNERGY 21 A Bag |
| S216805 | 3000±50 | SYNERGY 21 A Bag |
| S216806 | 5000±100 | SYNERGY 21 B Bag |
| S216807 | 7500±200 | SYNERGY 21 B Bag |
| S216808 | 10000±200 | SYNERGY 21 C Bag |
| S216809 | 15000±300 | SYNERGY 21 C Bag |

| COLOR:BLACK PANTONE BLACK 3C | | |
|------------------------------|-----------|------------------|
| ITEM | LENGTH | PACKING |
| S216829 | 150±10 | SYNERGY 21 A Bag |
| S216810 | 250±10 | SYNERGY 21 A Bag |
| S216811 | 500±15 | SYNERGY 21 A Bag |
| S216812 | 1000±20 | SYNERGY 21 A Bag |
| S216813 | 1500±30 | SYNERGY 21 A Bag |
| S216814 | 2000±30 | SYNERGY 21 A Bag |
| S216815 | 3000±50 | SYNERGY 21 A Bag |
| S216816 | 5000±100 | SYNERGY 21 B Bag |
| S216417 | 7500±200 | SYNERGY 21 B Bag |
| S216818 | 10000±200 | SYNERGY 21 C Bag |
| S216819 | 15000±300 | SYNERGY 21 C Bag |

| SYNERGY 21 | | | | | | | | | |
|------------|-----|---------------------------------|------------|------|--------------|-----------------------------------|----------------------|------------|---------------|
| | | | | | | CUSTOMER | | ITEM NO. | See The Chart |
| Hasia | | change "ROSH 2.0" to "ROSH 3.0" | 2022-02-25 | A1 | PRODUCT NAME | CAT. 6A S/FTP PATCH CORD TPE LSZH | manufacture country: | CHINA | UNIT MM |
| | | NEW | 2019-03-19 | A | DRAWNBY | CHECKBY | APPROVE | DATE | |
| BY | CHK | REVISION RECORD MODIFICATIONS | DATE | REV. | SYNERGY 21 | SYNERGY 21 | SYNERGY 21 | 2019-03-19 | |

| COLOR:RED PANTONE 199C | | |
|------------------------|-----------|------------------|
| ITEM | LENGTH | PACKING |
| S216889 | 150±10 | SYNERGY 21 A Bag |
| S216890 | 250±10 | SYNERGY 21 A Bag |
| S216891 | 500±15 | SYNERGY 21 A Bag |
| S216892 | 1000±20 | SYNERGY 21 A Bag |
| S216893 | 1500±30 | SYNERGY 21 A Bag |
| S216894 | 2000±30 | SYNERGY 21 A Bag |
| S216895 | 3000±50 | SYNERGY 21 A Bag |
| S216896 | 5000±100 | SYNERGY 21 B Bag |
| S216897 | 7500±200 | SYNERGY 21 B Bag |
| S216898 | 10000±200 | SYNERGY 21 C Bag |
| S216899 | 15000±300 | SYNERGY 21 C Bag |

SYNERGY 21

| | | | | | | | | | | |
|-------|-----|---------------------------------|------------|------|--------------|-----------------------------------|----------------------|---------------|------|----|
| | | | | | | | | | | |
| | | | | | CUSTOMER | | ITEM NO. | See The Chart | | |
| Hasia | | change "ROSH 2.0" to "ROSH 3.0" | 2022-02-25 | A1 | PRODUCT NAME | CAT. 6A S/FTP PATCH CORD TPE LSZH | manufacture country: | CHINA | UNIT | MM |
| | | NEW | 2019-03-19 | A | DRAWNBY | CHECKBY | APPROVE | DATE | | |
| BY | CHK | REVISION RECORD MODIFICATIONS | DATE | REV. | SYNERGY 21 | SYNERGY 21 | SYNERGY 21 | 2019-03-19 | | |