

**ALLNET USB 3.0 Typ-A/C Ethernet Adapter 2.5  
Gigabit LAN ALL0174XG**



**Quick Installation Guide**

The USB-C 2.5 Gigabit Ethernet adapter converts a USB-C port into a 10/100/1000/2500 Base-T Ethernet port. It can replace a damaged computer network card or connect a USB-C PC to a high speed Ethernet Network at places where a wireless connection is slow, oncosistent or not available at all. It is faster than gigabit and future-proof, hence idea for video conferencing, gaming, large files transferring and video streaming.

## System Requirements

Intel Premium III 1GHz (or above) -256MB RAM/CD-ROM/ 100MB Hard Disk Space (at least) / 100MB Hard Disk Space (at least)/ USB Type A Port-Windows 7/8/8.1/10, Mac OS 10.6 –10.10 or above

## Product Diagram

Port LED		Function
1	RJ45 Port	Connect to a Network Device.
2	LED	<ul style="list-style-type: none"><li>• Solid Blue: Indicates that the CAT5/6/6a Cable is connected to the RJ45 Port with a link speed of 2.5Gbps.</li><li>• Solid Green: Indicates that the CAT5/6/6a Cable is linked to the RJ45 Port with a link speed of 1Gbps/100Mbps/10Mbps.</li><li>• Flashing LED: Indicates network activity.</li><li>• Off: Indicates no connection.</li></ul>
3	USB-A/C Connector	Used to connect the Network Adapter to the Host Computer.

## Installation

### Hardware Installation

1. Connect a CAT5/6/6a Cable to the RJ45 Port on the Network Adapter and to a Network Device.
2. Connect the USB-A Connector on the Network Adapter to a USB-A/C port on the Host Computer.

### Driver Installation (From Virtual CD)

1. If the Drivers do not automatically download when you connect the Network Adapter to the Host Computer, a message that a Virtual CD is loaded will appear.
2. Click on the message, the CD Drive screen will open.
3. Click on the folder that is compatible with your Host Computer and run the **RTK\_NIC\_DRIVER\_INSTALLER** file to begin the background installation.

---

To view manuals, FAQs, videos, drivers, downloads, technical drawings, and more, visit [xxxxxxxxxx](#)

## Network Connection and Configuration

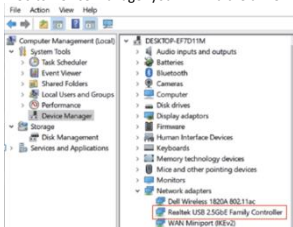
Please ensure you have connected your network device(s) to the adapter's LAN Port via an Ethernet cable and that the adapter plugs into a USB Port.

### Notes on Ethernet Cables

- Sometimes a so-called crossover Ethernet cable is required for connection to certain network equipments. As adapter's LAN port supports Auto-MDIX feature, it eliminates the need to use crossover cables.
- In order to achieve the full 2.5Gbps speeds for this adapter, you will need a CAT 5e or higher rated Ethernet cable that does not exceed 100m in length.

## Windows OS

1. Go to Device Manager you will find the driver has been installed.



## mac OS

2. Go to Apple Menu > System Preferences > Network. You could see "Connected " and USB 10/100/1G/2.5G is currently active...". Your new Ethernet adapter should now be available.

