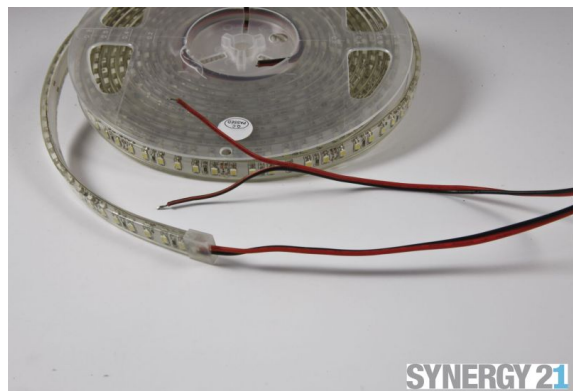


Synergy 21 LED Flex Strip 140 WW DC24V 48W IP62 CRI>90



kwh/1000h:	48,00
Lumens:	3500
Watt:	48,0
Nominal Service Life:	35000 Std.
Switching Cycles:	50000
Opt. Ambient Temperature.:	25 °C



Synergy 21 LED Flex Strip SMD2835 series

Length: 5m
Voltage: 24V,
Watt: 9,6W/m, 48W
Light colour: warm white, 3000K, CRI>90
Brightness: 700lm/m, total: 3500lm
Beam angle: 120°
Protection class: IP62
Number of LEDs: 140*2835HX/m, total: 700LEDs
Dimensions: 5000*8*5 mm
PCB colour: white, open cable end red black (150±5mm)
Working temperature: -25°C to +40°C
Can be shortened every 6 LEDs 5cm
Adhesive tape: yes 3M on the back

Energy efficiency class: A
kWh/1000h: 48

Strip can be shortened at the cut marks with sharp scissors.
!Attention! Strip must be checked for functionality beforehand.
Only split the strip when there is no current.

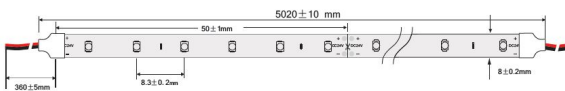
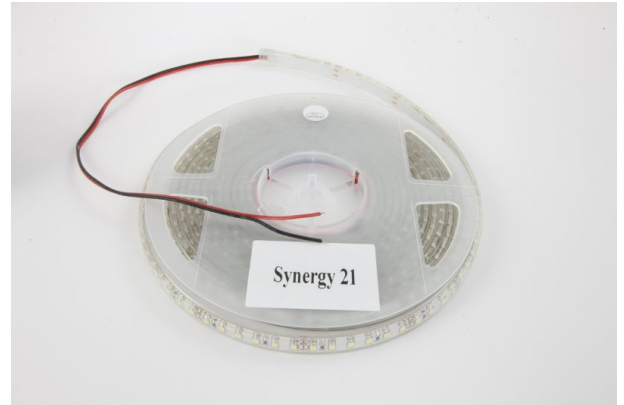
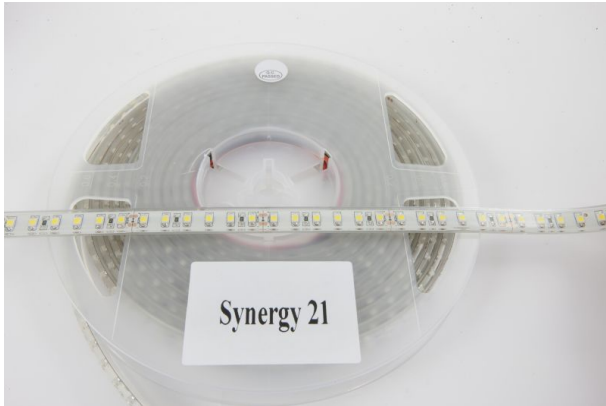
Our 3M adhesive tape adheres well, but should only be used as a mounting aid.
There are a variety of mounting options, such as clips, permanently elastic mounting adhesive, cable ties, etc.

Please note that LED strips must also be cooled.
Make sure that the LED strip does not exceed a working temperature of 40°C, otherwise its service life cannot be guaranteed.
No guarantee can be given for overheated LED strips.

Attributes

Attribute	Value
Abstrahlwinkel:	120
Ampere:	2
CC oder CV:	CV
CRI:	>90
Dimmbar:	abhängig vom Netzteil
LED Strip Klebeband:	ja
LED Strip Breite:	10.40
LED Strip Höhe:	5
LED Strip kürzbar:	50
LED Strip Länge:	5000
Lichtfabe in Kelvin:	3000
Lichtfarbe:	warmweiß
Lichtfarbe in Kelvin:	3000
Lichtfarbe Name:	warmweiß
Lumen:	3500
Schutzklasse:	IP62
Volt:	24
Weight:	0.2 Kg
Warranty:	24.00 Months

Additional Images





Accessories

Part No.	Name
81069	Synergy 21 LED zub Hollow Socket with Screw Terminals
81068	Synergy 21 LED zub wooden plug with screw terminals
81741	Synergy 21 LED Flex Strip add. Silicone mounting clip 10 pack
93682	Mean Well Power Supply - 24V 150W Dimmable IP65
93680	Mean Well power supply - 24V 80W dimmable IP65
174654	Synergy 21 LED FLEX-Streifen zub. Easy Connect I Form für 1 Linie klar

Part No.	Name
174653	Synergy 21 LED FLEX Strip add. Easy Connect I Form for 1 line red
174656	Synergy 21 LED FLEX Strip zub. Easy Connect I Form für 2 Linie klar
174655	Synergy 21 LED FLEX Strip zub. Easy Connect I shape for 2 line red
174648	Synergy 21 LED FLEX-Strips add. Easy Connect T-shape for 1 line clear
174650	Synergy 21 LED FLEX-Streifen zub. Easy Connect T-Form für 1 Linie klar
174647	Synergy 21 LED FLEX Strip zub. Easy Connect T-Form für 1 Linie rot
174649	Synergy 21 LED FLEX Strip zub. Easy Connect T-Form für 1 Linie rot
174652	Synergy 21 LED FLEX-Streifen zub. Easy Connect T-Form für 2 Linien klar
174651	Synergy 21 LED FLEX Strip add. Easy Connect T-shape for 2 lines red
174637	Synergy 21 LED FLEX-Strips add. Easy Connect strip to strip connection 10/12mm IP67
174633	Synergy 21 LED FLEX strips add. Simple connection of strips to cable 10/12mm IP67