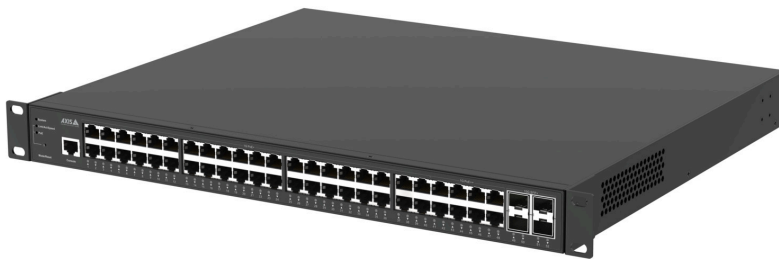


# AXIS D8248 Managed PoE++ Switch

48-port switch for efficient network management

AXIS D8248 Managed PoE++ Switch is an easy to install 48-port managed gigabit switch – a perfect complement to Axis recorders to further simplify setup and installation of surveillance systems. AXIS D8248 comes with an integrated DHCP server for automatic assignment of IP addresses and discovery of connected Axis devices. Furthermore, featuring a familiar Axis interface with a graphic topology for easy overview of devices, AXIS D8248 ensures easy configuration with Axis products.

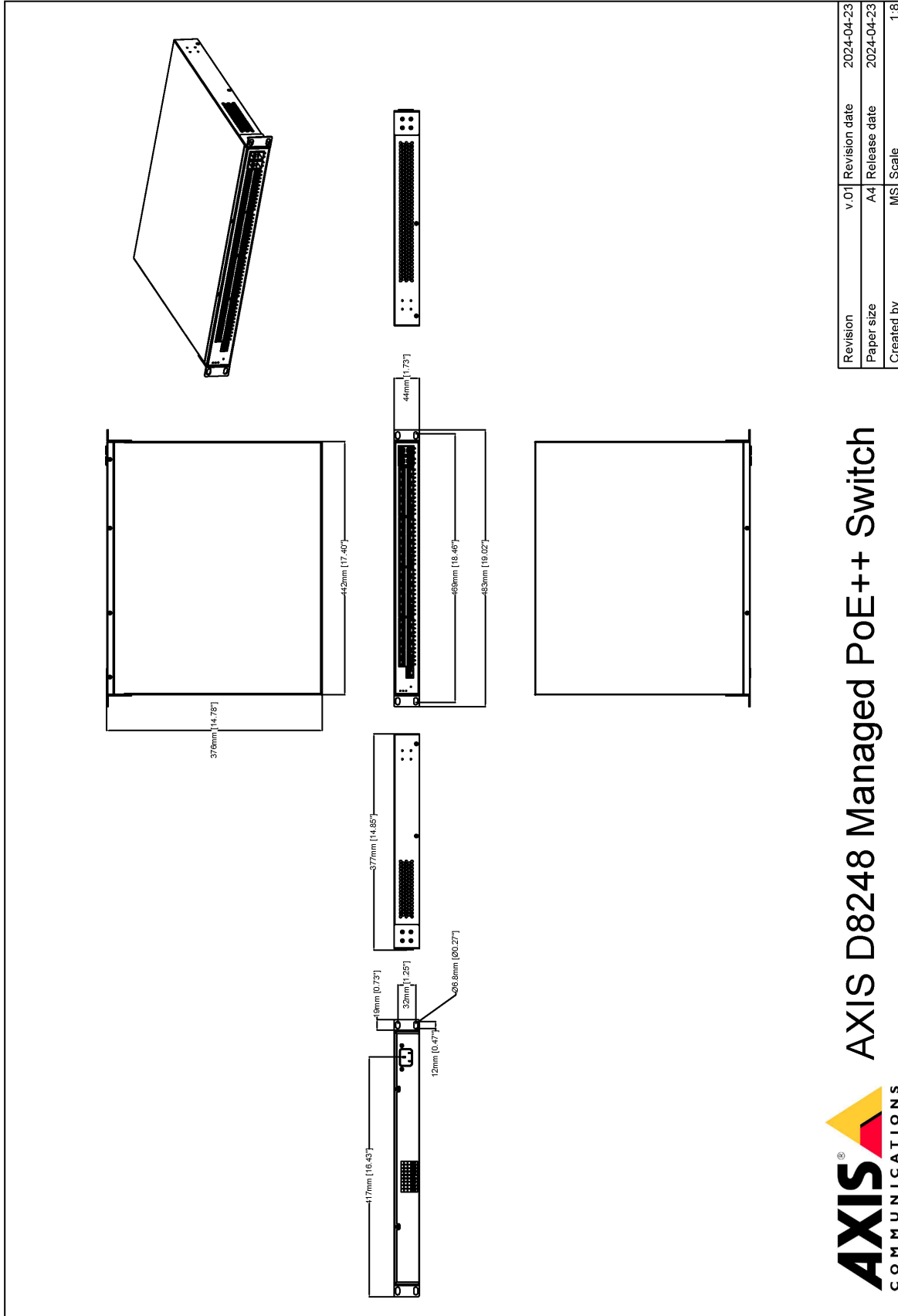
- > **740 W power budget**
- > **Optimized for surveillance solutions**
- > **Compliant with IEEE 802.3bt up to 90 W**
- > **4 SFP+ ports**
- > **Intuitive graphic topology for system overview**



# AXIS D8248 Managed PoE++ Switch

<b>Network</b>		Port 41-48: IEEE802.3bt Type 4 Class 8, max 90 W output PoE Power budget: 740 W	
<b>Network function</b>	Full L2 switching features including L3 features: IPv4/IPv6 static route, RIP, and OSPF	<b>Connectors</b>	
<b>Network protocols</b>	IPv4, IPv6, HTTP, HTTPS, QoS Layer 3 DiffServ, SMTP, mDNS (Bonjour), UPnP®, SNMP v1/v2c/v3, DNS/DNSv6, NTP, TCP, UDP, IGMPv1/v2/v3, ICMP, DHCP, ARP, SSH, CDP, RADIUS, TACACS+, Syslog, IEEE 802.1X, 802.1Q (VLAN), LLDP, LLDP-MED, STP, MSTP, RSTP, LACP	PoE ports RJ45 10BASE-T/100BASE-TX/1000BASE-T PoE (48x) <b>Data ports/Uplink</b> 10GBASE-LR/SR SFP+ (4x) <b>Power</b> Power connector port (1x) <b>Console</b> RJ45 (1x)	
<b>Throughput</b>	130.944 Mpps	<b>Surge protection</b>	
<b>Switching capacity</b>	176 Gbps	Network ports: 1kV AC lines: 2kV	
<b>MAC table</b>	32 K	<b>Operating conditions</b>	
<b>Jumbo frames</b>	10240 Bytes	0 to 45 °C (32 °F to 113 °F) Humidity 0–95% RH (non-condensing)	
<b>Approvals</b>		<b>Storage conditions</b>	
<b>Product markings</b>	CSA, UL/cUL, CE, VCCI, RCM, FCC, ICES, MIC Telecom, C-mark	-20 °C to 70 °C (-4 °F to 158 °F) Humidity 5–95% RH (non-condensing)	
<b>Supply chain</b>	TAA compliant	<b>Dimensions</b>	
<b>EMC</b>	EN 55035, EN 55032 Class A, EN 61000-6-1, EN 61000-6-2 Australia/New Zealand: RCM AS/NZS CISPR 32 Class A Canada: ICES(A)/NMB(A) Japan: VCCI Class A USA: FCC Part 15 Subpart B Class A	Minimum rack depth: 18" For the overall product dimensions, see the dimension drawing in this datasheet.	
<b>Safety</b>	CAN/CSA C22.2 No. 62368-1 ed. 3, IEC/EN/UL 62368-1 ed. 3, AS/NZS 62368.1, J62368-1	<b>Weight</b>	
<b>Environment</b>	IEC/EN 60529 IP20	5620 g (12.4 lb)	
<b>Telecoms</b>	MIC Telecom	<b>Box content</b>	
<b>Cybersecurity</b>		Switch, installation guide, 19" ear rack kit, rubber feet (4x), power cord	
<b>Network security</b>	IEEE 802.1X, HTTPS encryption, TLS v1.2, X.509, Access Control List (ACL), port security, IP source guard, storm control, private VLAN, DHCP snooping, ARP inspection, password protection, loop protection	<b>Optional accessories</b>	
<b>Documentation</b>	<i>AXIS Network Switches Hardening Guide</i> <i>Axis Vulnerability Management Policy</i> <i>Axis Security Development Model</i> Software Bill of Material (SBOM) To download documents, go to <a href="https://axis.com/support/cybersecurity/resources">axis.com/support/cybersecurity/resources</a> To read more about Axis cybersecurity support, go to <a href="https://axis.com/cybersecurity">axis.com/cybersecurity</a>	AXIS TD8901 SFP+ Module LC.LR.X AXIS TD8902 SFP+ Module LC.SR.X For more accessories, go to <a href="https://axis.com/products/axis-d8248-managed-poe-switch#accessories">axis.com/products/axis-d8248-managed-poe-switch#accessories</a>	
<b>General</b>		<b>System tools</b>	
<b>Casing</b>	Steel Color: Black	AXIS Site Designer, AXIS Device Manager, product selector, accessory selector Available at <a href="https://axis.com">axis.com</a>	
<b>Power</b>	100–240 V AC, 50/60 Hz	<b>Languages</b>	
<b>Pin assignment</b>	Power over pairs: Port 1–40: 3/6 (+ve) and 1/2 (-ve) Port 41–48: 3/6, 4/5 (+ve) and 1/2, 7/8 (-ve)	English	
<b>PoE output</b>	Port 1–40: IEEE802.3at Type 2 Class 4, max 30 W output	<b>Warranty</b>	
		5-year warranty, see <a href="https://axis.com/warranty">axis.com/warranty</a>	
		<b>Part numbers</b>	
		Available at <a href="https://axis.com/products/axis-d8248-managed-poe-switch#part-numbers">axis.com/products/axis-d8248-managed-poe-switch#part-numbers</a>	
		<b>Sustainability</b>	
		<b>Substance control</b>	PVC free, BFR/CFR free in accordance with JEDEC/ECA Standard JS709 RoHS in accordance with EU RoHS Directive 2011/65/EU and 2015/863, and standard EN IEC 63000:2018 REACH in accordance with (EC) No 1907/2006. For SCIP UUID, see <a href="https://echa.europa.eu">echa.europa.eu</a>
		<b>Materials</b>	Screened for conflict minerals in accordance with OECD guidelines To read more about sustainability at Axis, go to <a href="https://axis.com/about-axis/sustainability">axis.com/about-axis/sustainability</a>
		<b>Environmental responsibility</b>	<a href="https://axis.com/environmental-responsibility">axis.com/environmental-responsibility</a> Axis Communications is a signatory of the UN Global Compact, read more at <a href="https://unglobalcompact.org">unglobalcompact.org</a>

# Dimension drawing



**AXIS** COMMUNICATIONS  
www.axis.com

**AXIS D8248 Managed PoE++ Switch**

© 2024 Axis Communications