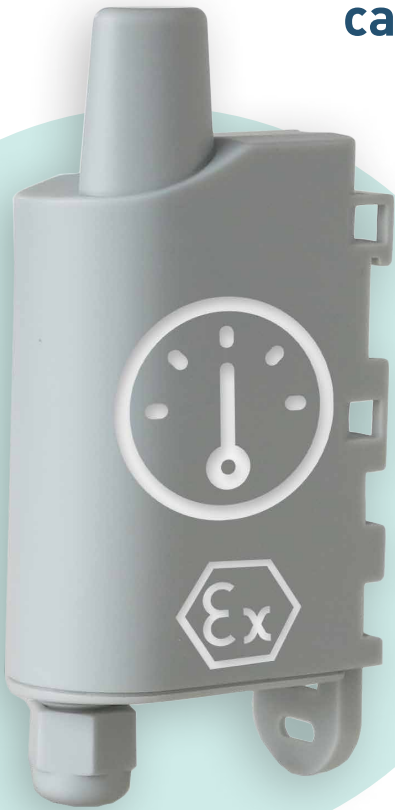




# PULSE ATEX

Give all your meters communications capability in explosive atmosphere.



ALERT

- Monitor any leaks



MONITOR

- Receive values of the indexes from gas, water, electricity and heat meters
- Monitor over-consumption

## BENEFITS

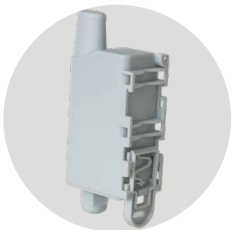
- **ATEX** product: used in explosive atmosphere
- Gas & steam

Zone 1 : immediate proximity to the sensitive area

Groupe IIC : hydrogen gases and vapors, acetylene ...  
Dust

Zone 21 : immediate proximity to the sensitive area

- Up to 2 connectable meters
- Detection of tamper and leaks
- Flow rate monitoring
- Locally and remotely configurable
- Data logging for optimal autonomy
- Redundancy for better service continuity
- Timestamp (LoRaWAN®)
- Network test at startup (LoRaWAN®)



# PRODUCT USES



Monitor your energy consumption in the immediate proximity of your meter.



Count the opened / closed status or filling volume of a grain silo, placed on a SEVESO site.

## TECHNICAL SPECIFICATIONS

- Periodic mode with or without log
    - Data redundancy
    - Soldered battery
  - Dimensions: 105 x 50 x 27 mm
  - Casing: IP67 (IP68 on request)
  - Integrated fastening system: DIN rail, tube, wall, flange
    - Configurable Life Frame
  - Zone: Sigfox: RC1 / LoRaWAN: EU863-870 /
    - WM-Bus: 868 on demand (MoQ)
  - Operating temperature range: -25°C / +70°C
    - Weight: 70 g
  - Standards: Directive 2014/53/EU (RED)
  - Alert concerning product, configuration error, low battery
    - ATEX Specifications :
      - ATEX II 2 G D
      - Ex ib IIC T4 Gb
      - Ex ib IIIC T135°C Db
      - 20°C < Tamb < +40°C
- Uo ≤ 3.9V; Io ≤ 6.1mA; Po ≤ 6mW; Co ≤ 440μF;  
Lo ≤ 930mH
- Ui ≤ 15V; Ii ≤ 1000mA; Pi ≤ 3750mW; Ci = 0μF;  
Li = 0.13mH

CEA-V3

