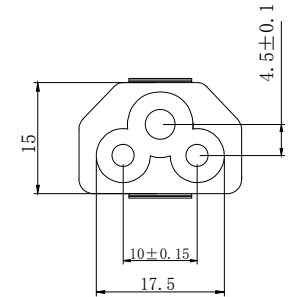
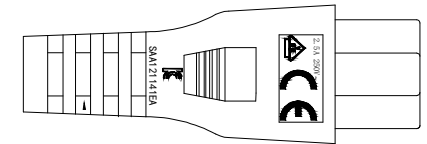
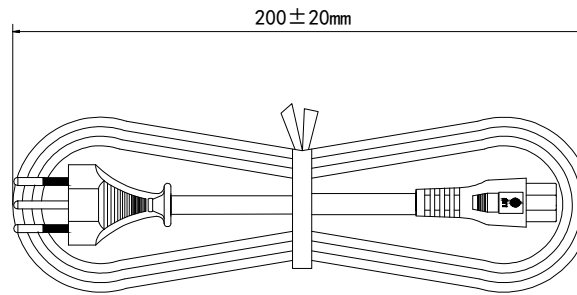
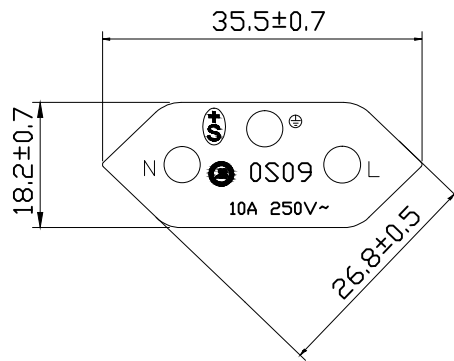
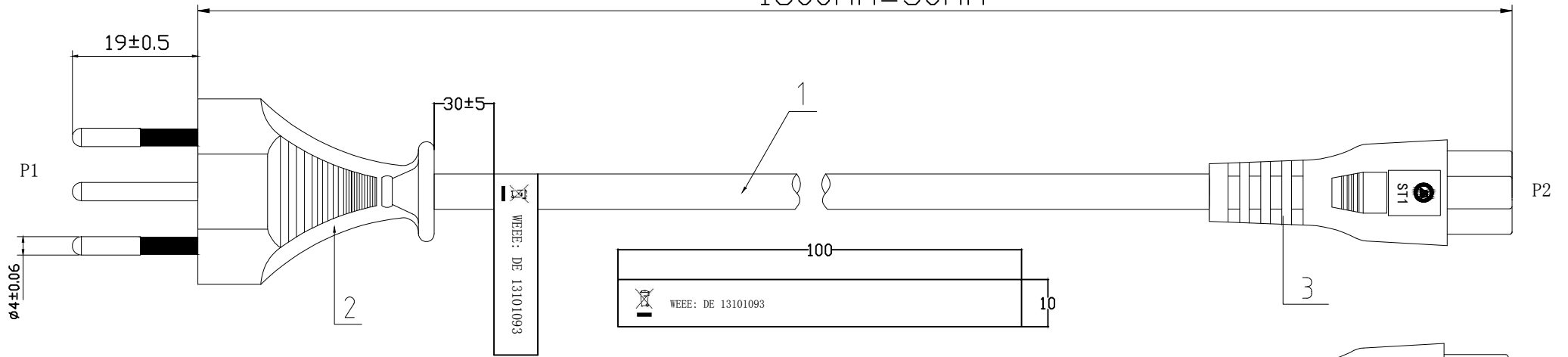


1800mm±50mm



CONF IGURATION:

P1 green/yellow P2
 E brown E
 L blue L
 N blue N



MATERIAL LIST:

NO.	PARTS NAME	SPECIFICATION STANDARD	QT' Y	REMARK
③	P2	IEC 60320/C5:3PIN POWER FEMALE 2.5A 250V, MOLD BLACK PVC	1	
②	P1	Schweiz Typel2:3PIN POWER MALE 10A 250V, MOLD BLACK PVC	1	
①	CABLE	H05VV-F 3G0.75mm ² X2.0M, PVC JACKET OD:6.5±0.2MM	1	

NOTE:

- TESTING:100% OPEN SHORT AND MISS WIRE
- ROHS2.0 COMPLIANT

SYNERGY 21					
CUSTOMER		ITEM NO.		S215445	
PRODUCT NAME		manufacture country:		CHINA	UNIT MM
Schweiz Typel2 male to IEC 60320/C5 female					
NEW		2019-02-19	A	DRAWNBY	CHECKBY
REVISION RECORD MODIFICATIONS		DATE	REV.	APPOBY	DATE
BY	CHK			SYNERGY 21	2019-02-19