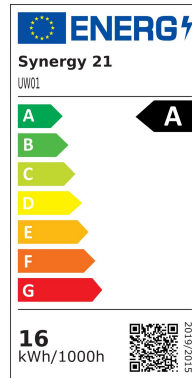


Synergy 21 LED LoRa (433MHz) poollight 15W RGB+CCT *Milight/Miboxer*



kwh/1000h:	16,50
Lumens:	1100
Watt:	15,0
Nominal Service Life:	35000 Std.
Switching Cycles:	50000
Opt. Ambient Temperature.:	25 °C



Experience the **15W RGB+CCT Wall-mounted Underwater Light** with cutting-edge technology and impressive performance. This high-quality underwater light, which is controlled via **LoRa 433MHz** technology, offers you maximum flexibility and control when illuminating your water surfaces.

With an **output of 15W** and an **input voltage of AC12V / DC12~24V**, this light delivers an impressive **brightness of 1100LM** and a **light efficiency of 72LM/W**. The **colour temperature range from 2700K to 6500K** allows you to create the perfect lighting mood to suit your needs.

Thanks to **LoRa Spread Spectrum Modulation**, the **15W RGB+CCT Wall-mounted Underwater Light** offers reliable control over a **range of up to 50 metres**, even when the light is installed up to 0.5 metres underwater. The **IP68 protection class** guarantees complete water and dust tightness, while the **housing made of 316 stainless steel and PC** ensures outstanding durability and resistance.

With a **lifespan of 50,000 hours** and an **energy efficiency class A**, this underwater light is not only environmentally friendly but also particularly economical. The wide **beam angle of 160°** ensures even and comprehensive illumination.

The **15W RGB+CCT Wall-mounted Underwater Light** is ideal for creating elegant waterscapes and provides impressive lighting accents in your outdoor area.

Product Name: 15W RGB+CCT Wall-mounted Underwater Light (LoRa 433MHz)
Model No.: UW01
Power: 15W
Input Voltage: AC12V / DC12~24V

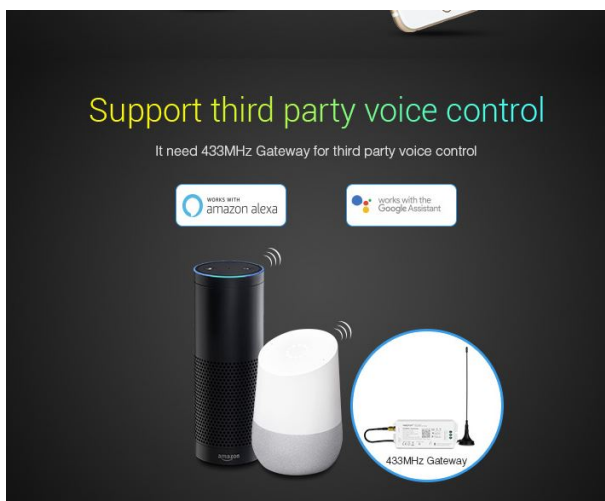
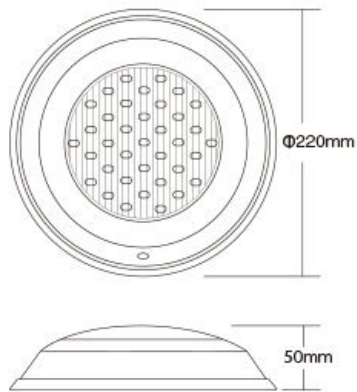
Working Temperature: -20~45°
RF: 433MHz
Modulation Method: LoRa spread spectrum
Control distance: 50m (Lamps into 0.5m underwater)
Colour temperature: 2700K~6500K
Luminous flux: 1100LM
Light Efficiency: 72LM/W
CRI: >80
Lifespan: 50000h
Beam Angle: 160°
IP Rate: IP68
Housing Material: 316 Stainless Steel+PC

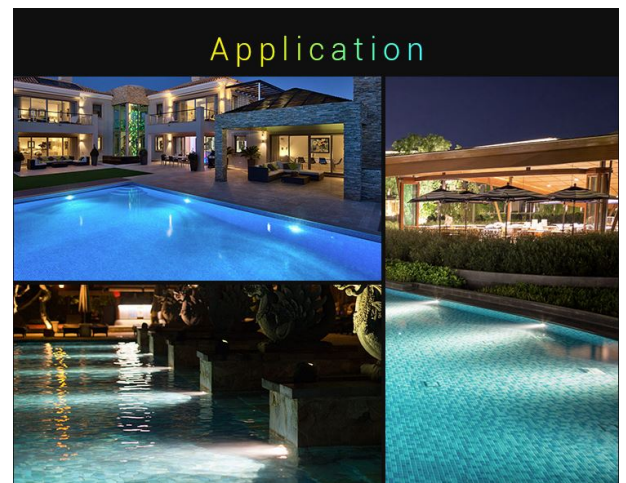
Energy efficiency class: A
kWh/1000h: 16.5

Attributes

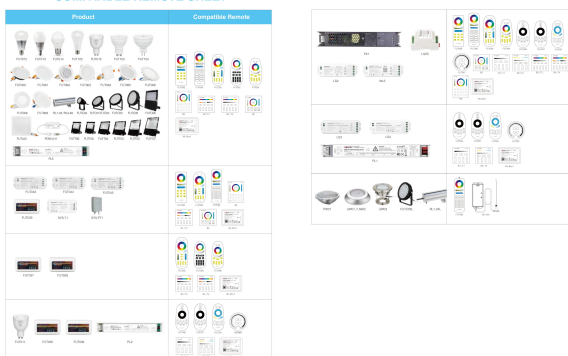
Attribute	Value
Abstrahlwinkel:	160
CC oder CV:	CV
Dimmbar:	Ja
Grösse:	220*50
LED - Gehäusematerial:	Stahl
Lichtfarbe:	RGB-WW
Lichtfarbe in Kelvin:	2700~6500
Lumen:	1100
Schutzklasse:	IP68
Volt:	12/24
Weight:	1 Kg

Additional Images





COMPATIBLE REMOTE SHEET



Accessories

Part No.	Name
178057	Synergy 21 LED LoRa (433MHZ) poollight 15W RGB+CCT *Milight/Miboxer*
178058	Synergy 21 LED LoRa (433MHZ) controller DMX LoRa *Milight/Miboxer*
178059	Synergy 21 LED LoRa (433MHZ) pool light 27W RGB+CCT *Milight/Miboxer*
178060	Synergy 21 LED LoRa (433MHZ) pool lamp 9W RGB+CCT *Milight/Miboxer*
178061	Synergy 21 LED LoRa (433MHZ) PAR56 pool light 27W RGB+CCT *Milight/Miboxer*
178062	Synergy 21 LED LoRa (433MHZ) remote *Milight/Miboxer*
178154	Synergy 21 LED LoRa (433MHZ) garden lamp 25W RGB-WW with RF IP66 230V *Milight/Miboxer*
178172	Synergy 21 LED LoRa (433MHZ) wallwasher 24W RGB+CCT IP66 *Milight/Miboxer*