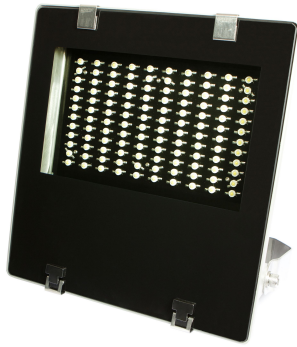
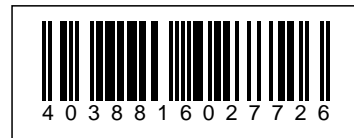


## Synergy 21 LED Spot Outdoor floodlight 100W nw



kwh/1000h:	100,00
Lumens:	10000
Watt:	100,0
Nominal Service Life:	35000 Std.
Switching Cycles:	50000
Opt. Ambient Temperature.:	25 °C



With emergency power function and overheating protection  
 Operating voltage: > AC 207-253V/50-60Hz  
 LED: 100Watt high-power chips  
 Beam angle: 120°  
 Lumen: 10300lm  
 Neutral white: 4200K ±150  
 CRI: Ra>80  
 dimmable: yes (leading edge phase dimmer)  
 Housing: light grey with stainless steel mounting bracket  
 Front glass: toughened safety glass (ESG)  
 Operating temperature: -25°C to +55°C  
 Protection class: IP65 (water jet-proof)  
 Weight: 7kg  
 Dimensions: (l\*w\*h) 365\*340\*90mm

Energy efficiency class: A+  
kWh/1000h: 100

### Attributes

Attribute	Value
Betriebstemperatur:	-25 bis +55

Attribute	Value
CRI:	>80
Dimmbar:	ja
Lichtfarbe:	neutralweiss
Lichtfarbe in Kelvin:	4200
Lumen:	10300
Weight:	7 Kg

## Accessories

Part No.	Name
148726	Synergy 21 - Waterproof connector 1:1
148727	Synergy 21 - Waterproof connector 1:2
148730	Synergy 21 - Waterproof connector box 3 ports
148729	Synergy 21 - Waterproof connector box 3 ports transparent
148728	Synergy 21 - Waterproof connector box 4 ports
134568	Finder motion detector IP55
113414	Finder motion detector IP54
82434	Finder Twilight Switch suitable for Synergy 21 LED outdoor spotlight
147265	Netzkabel 230V Schutzkontakt CEE7(Stecker)->Open End mit Adernendhülsen, 1,8m,Black