



No. d'article: 195716
Numéro de fabricant: ALL-SGI8104PM-BT

ALLNET Switch industrial full managed Layer2+ 6 Port GbE • PoE Budget 360W • 4x PoE bt • 2x SFP • Fanless, DIN • ALL-SGI8104PM-BT

>>> Vers l'article de la boutique en ligne

EAN CODE



ALLNET Switch industrial full managed Layer2+ 6 Port GbE • PoE Budget 360W • 4x PoE bt • 2x SFP • Fanless, DIN • ALL-SGI8104PM-BT

Highlights:

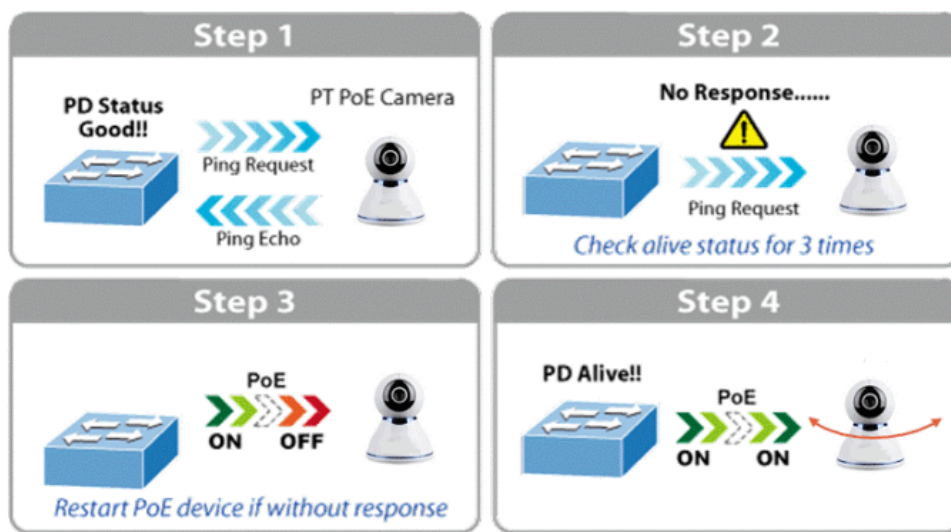
- 4 Gigabit ports with PoE AF/AT/BT support up to 90Watt per port
- 2x SFP ports for fiber-GBIC e.g. ALL4750/4751-INDU etc.
- PoE Ports 1-4 max. PoE IEEE802.3bt 90W
- Layer2+ features like 802.1Q VLAN, Port Isolation IGMP, LLDP, PoE+ Management, IP source Guard, ACLs etc.
- Supports Spanning Tree STP (802.1D) and RSTP (802.1W) and MSTP (802.1s)
- Supports PoE management like PoE scheduling, PoE PD-alive, Port PoE Priority, Soft-Reboot PoE Non-Stop
- Supports G.8032 quick ring protocol. Self-healing <20ms
- Max. PoE budget = 360 watts
- Fanless metal enclosure with optimized heat dissipation
- Easy to use as a desktop, wall mount or DIN rail device
- Extended temperature range from -40°C ~ +75°C

ALLNET ALL-SGI8104PM-BT Industrial Switch is a Layer 2+ managed Gigabit BT PoE Switch that features 4-Port Gigabit IEEE802.3af/at/bt PoE + 2-Port Gigabit SFP optical port, is specially designed to build a full Gigabit backbone to transmit reliable and high-speed data in heavy industrial demanding environments and forward data to remote network through fiber optic cabling. It comes with an IP40 rugged case and redundant power system. The industrial managed switch provides user-friendly but advanced IPv6/IPv4 management interfaces and Soft-Reboot PoE Non-stop function. It is the best investment for expanding industrial business or upgrading its network

Infrastructure, also could be used for lighting industry, security monitoring, enterprise park and other

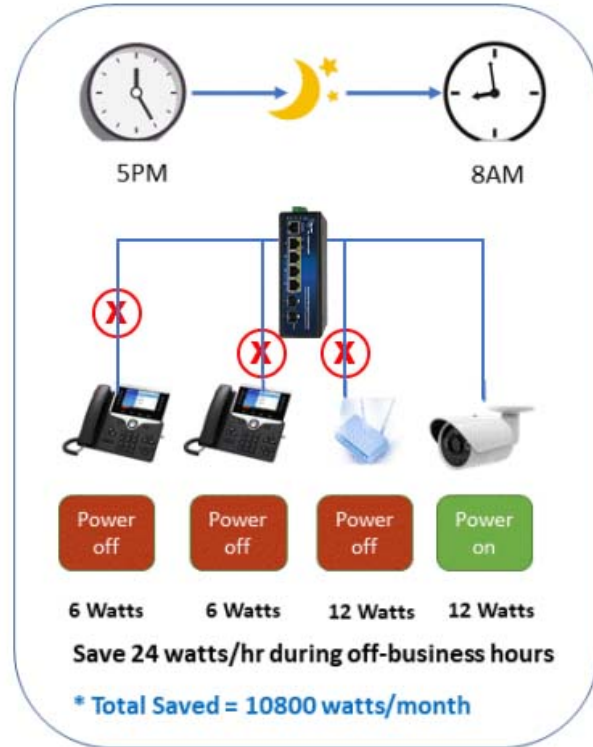
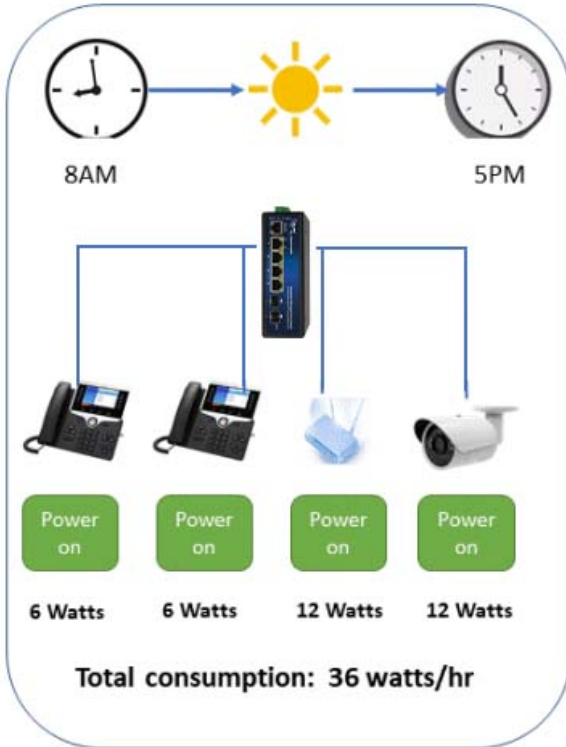
Intelligent PD–Alive Check for Frozen PDs

The ALL-SGI8104PM-BT industrial PoE switch 4 ports can be configured to monitor connected PD's status in real time. Once the PD stops working and responding, the ALL-SGI8104PM-BT will reboot the PoE port power and bring the PD back to work. It also greatly enhances the reliability in that the PoE port will reset the PD power, thus reducing administrator's management burden.



PoE Schedule Function for Energy Saving

For environmental protection purpose, the ALL-SGI8104PM-BT switch Ethernet PoE can effectively control the power supply besides its capability of giving high watts power. The PoE schedule function helps to enable or disable PoE power feeding for each PoE port during specified time intervals and it is a powerful function to help SMBs or enterprises save power and money.



1000 BASE-T UTP With PoE

Scheduled PD Re-starting

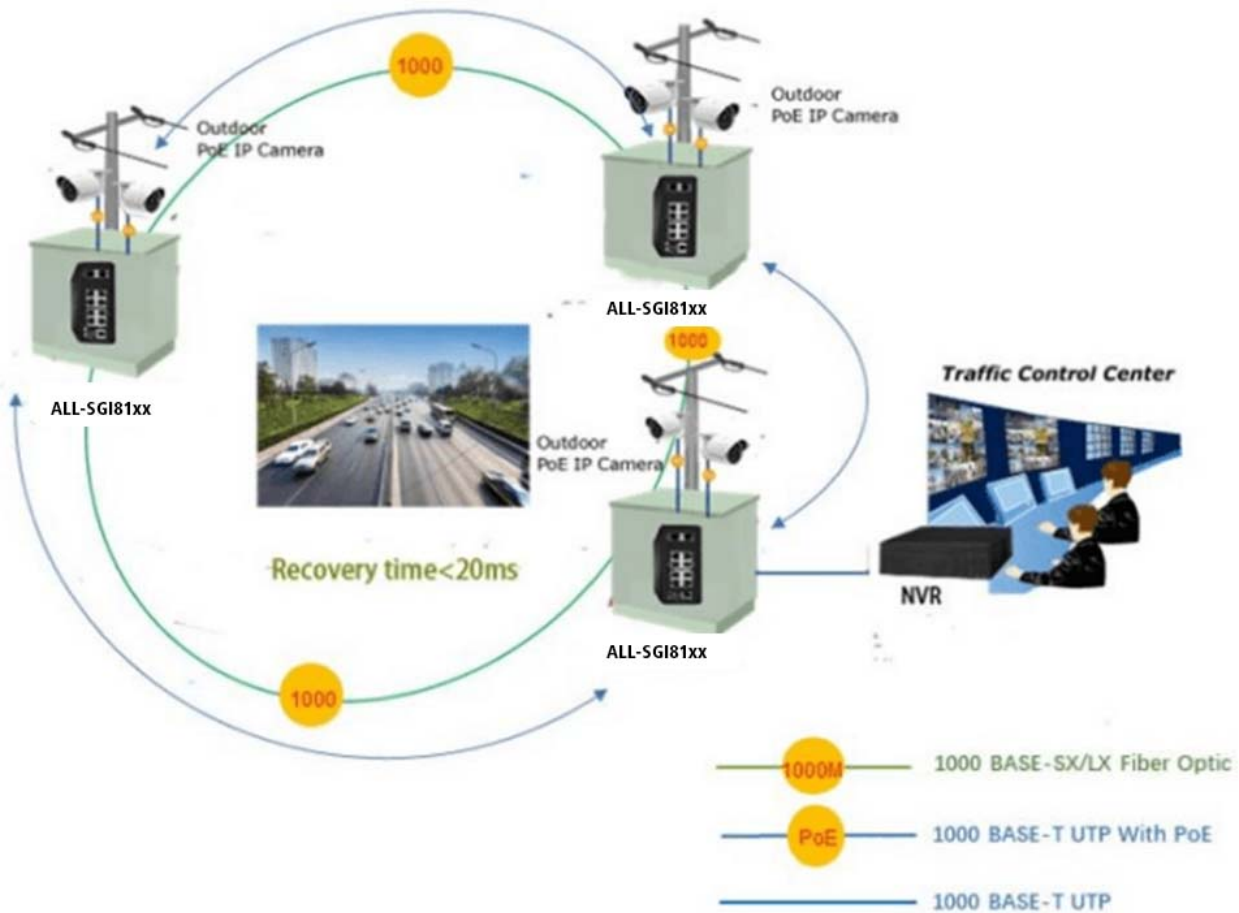
The ALL-SGI8104PM-BT smart switch PoE allows each of the connected PoE IP cameras or PoE wireless access points to reboot at a specific time each week. Therefore, it will reduce the chance of IP camera or AP crash resulting from buffer overflow.



Fast Recovery Redundant Ring for Critical Network Applications

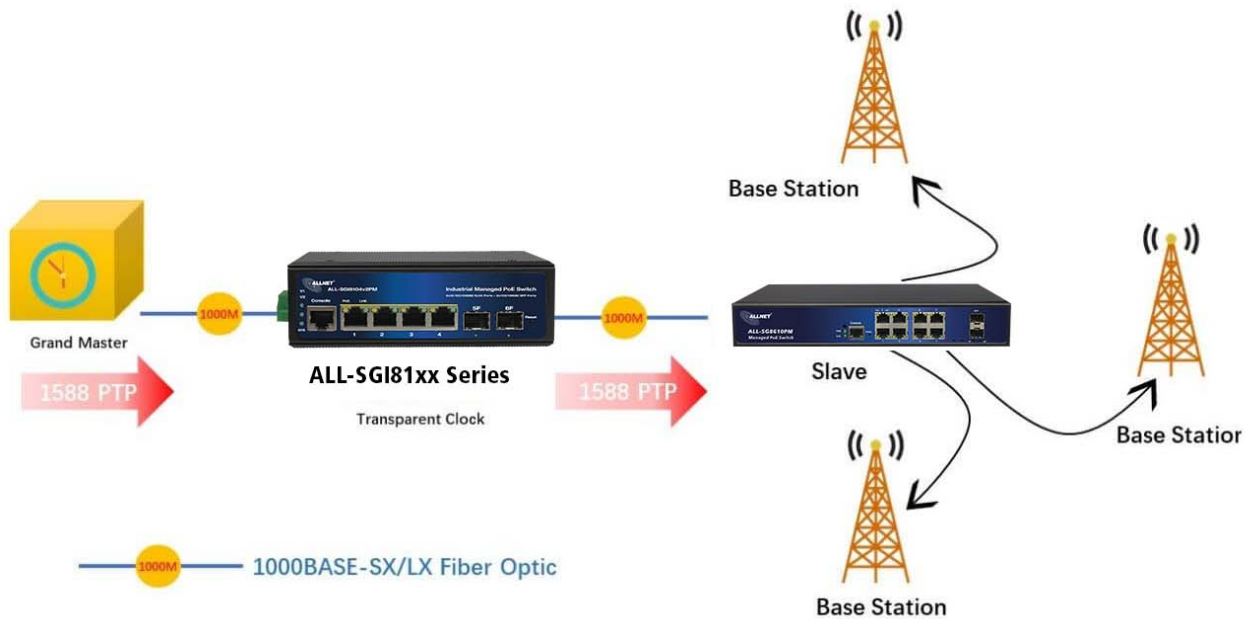
The ALL-SGI8104PM-BT supports redundant ring technology and features strong, rapid self-recovery capability to prevent interruptions and external intrusions. It incorporates advanced ITU-T G.8032 ERPS technology, Spanning Tree Protocol (802.1s MSTP), and redundant power input system into customer's industrial automation network to enhance system reliability and uptime in harsh factory environments. In a certain simple Ring network, the recovery time of data link can be as fast as 20ms.

ERPS Ring for Video Transmission Redundancy



1588 Time Protocol for Industrial Computing Networks

The ALL-SGI8104PM-BT is ideal for telecom and Carrier Ethernet applications, supporting MEF service delivery and timing over packet solutions for IEEE 1588 and synchronous Ethernet.



Strong Layer 2 Features

The ALL-SGI8104PM-BT layer 2 Ethernet switch can be programmed for advanced Layer 2 switch management functions such as dynamic port link aggregation, 802.1Q tagged VLAN, Q-in-Q VLAN, private VLAN, Multiple Spanning Tree Protocol (MSTP), QoS, bandwidth control, IGMP snooping and MLD snooping. Via the aggregation of supporting ports, the ALL-SGI8104PM-BT allows the operation of a high-speed trunk group that comes with multiple ports and supports fail-over as well.

Efficient and Various Management Methods

For efficient management, the ALL-SGI8104PM-BT is equipped with console, Web and SNMP management interfaces.

With the built-in Web-based management interface, it offers an easy-to-use, platform-independent management and configuration facility.

For text-based management, it can be accessed via Telnet and the console port.

For standard-based monitor and management software, it offers SNMPv3 connection which encrypts the packet content at each session for secure remote management.

Intelligent PoE Switch SFP DDM Function

The ALL-SGI8104PM-BT supports SFP-DDM (digital diagnostic monitor) function that greatly helps network administrator to easily monitor real-time parameters of the SFP transceivers, such as optical output power, optical input power, temperature, laser bias current, and transceiver supply voltage.

The technical equipment and the stable housing make the switch the ideal solution in the industrial area. Delivery without power supply - please order separately!



Technical Details:

| | |
|-----------------------|---|
| Model | ALL-SGI8104PM-BT |
| Copper Ports | 4x 10/100/1000BASE-T RJ45 auto-sensing ports |
| Fiber Ports | 2x 100/1000BASE-T SFP interfaces, supports 100/1000Mbps dual mode |
| PoE Ports | 4x-802.3af/802.3at/bt PoE Injector Ports |
| Console Ports | 1 x RS-232-to-RJ45 serial port (115200, 8, N, 1) |
| Switch Architecture | Store-and-Forward |
| Switch Fabric | 12Gbps/non-blocking |
| Throughput | 8.928Mpps @64 bytes |
| Address Table | 8K entries |
| Share Data Buffer | 4.1 Mb |
| Jumbo Frame | 9216 Bytes |
| SDRAM | 1Gb |
| Flash Memory | 128Mb |
| Flow Control | IEEE 802.3x pause frame for full-duplex ; Back pressure for half-duplex |
| Reset Button | >2 sec.: Factory default and reset |
| Power Supply | 48 ~ 57 VDC, 50/60Hz, Dual DC for PoE support 12VDC ~ 48VDC for non PoE support |
| PoE Standards | IEEE 802.3af Power over Ethernet/PSE IEEE 802.3at Power over Ethernet Plus/PSE IEEE802.3bt PoE over Ethernet PlusPlus/PSE |
| PoE Power Supply Type | Per Port 52V DC, Max. 90watts |
| LED Indicators | Power: Green Solid on--power work normal, off--power disconnected System: Green Blink--work normally, solid on--soft work abnormal, fast blink--soft upgrade PoE: Yellow Solid on--PoE work normally, Off--PoE doesn't work, Blink--PoE overload 10/100/1000T RJ45 Interfaces (Port 1 to Port 4): 1 000 LNK/ACT (Green), Blink--port connected with data transmission; Solid on--port connected without data transmission 100/1000Mbps SFP Interfaces (Port 5 to Port 6): Green Blink- port connected with data transmission; Solid on- port connected without data transmission |



| | |
|---------------------|---|
| EMC | Surge Immunity:6KV Per: IEC61000-4-5 ESD Protection: ESD Level 4 Per: IEC61000-4-2;EFT Level 4 Per: IEC61000-4-4 |
| Dimension | 145x112x47.2mm |
| Weight | 0.6kg |
| Working Temperature | -40°C to 75°C |
| Storage Temperature | -40°C to 80°C |
| Operation Humidity | 5% to 95%, non-condensing |
| MTBF | 50,000hrs |

Layer 2 functions

| | |
|--------------------|--|
| Port configuration | Auto-negotiation Flow Control Port Mirror: TX/RX/BOTH; Many-to-1 monitor CPU Mirror Traffic statistics |
| Link Aggregation | Static link aggregation LACP(Dynamic Trunk/Static Trunk) Algorithm based on Source/Destination MAC Algorithm based on Source/Destination IP |
| MAC Table | Aging Time Static MAC address Dynamic MAC address management |
| VLAN | 4094 Active VLANs 4094 VID 802.1Q Tag VLAN Port VLAN Protocol VLAN MAC VLAN |



| | |
|-----------------|--|
| | Voice VLAN 802.1ad Q-in-Q tunneling Private VLAN (Protected port) GARP/GVRP |
| ACL | 256ACLs L2, L3 e L4 Time-based ACL IP ACL MAC ACL MAC-IP ACL User-Defined ACL ICMPv6 |
| Spanning tree | 802.1D Spanning Tree Protocol (STP) 802.1w Rapid Spanning Tree Protocol (RSTP) 802.1s Multiple Spanning Tree Protocol (MSTP) Loop Guard Root Guard TC-BPDU Guard BPDU Guard BPDU Filter |
| Ring Protection | <20ms G.8032 ERPS Ring Fast Ring ALLNET Ring, < 20ms |
| Multicast | 256 groups IGMP v1/v2/v3 Snooping, Fast Leave MLD Snooping |



| | |
|-------------------|--|
| | <p>Multicast VLAN</p> <p>IGMP filter</p> <p>MVR</p> <p>Multicast Routing</p> |
| QOS | <p>8 mapping IDs to 8 level priority queues</p> <p>CoS port-based</p> <p>CoS 802.1p-based</p> <p>CoS DSCP-based</p> <p>Scheduling algorithms SP, WRR, SP+WRR</p> <p>Storm Control (Broadcast, Multicast, Unknown Unicast)</p> <p>Bandwidth control per port</p> <p>SWRR, DWRR for Scheduling</p> <p>Flow Redirect</p> <p>Precedence</p> <p>TOS</p> <p>Rate Limiting(Ingress/Egress)</p> <p>Stri Priority</p> |
| Security Features | <p>Port Security</p> <p>MAC address filter</p> <p>ARP Association (Manual, ARP scanning, DHCP snooping)</p> <p>ARP Protection</p> <p>AAA</p> <p>DAI</p> <p>DoS (Denial of Service)</p> <p>Classification of packages based on: End.MAC, IP End,</p> |



| | |
|------------|--|
| | <p>TCP / UDP Ports,</p> <p>Protocol Type;</p> <p>802.1x Authentication (port-based e MAC-based)</p> <p>TACACS/TACACS+ Authentication</p> <p>RADIUS Authentication</p> <p>DHCP Filter</p> <p>Guest VLAN</p> <p>SSLv2/SSLv3/TLSv1</p> <p>SSHv1/SSHv2</p> <p>Restriction of WEB access based on: IP Address, And. MAC and Port;</p> <p>Port Isolation</p> <p>Loopback detection</p> |
| Management | <p>SNMP v1/v2c/v3 with Full Private MIBs</p> <p>RMON 4 groups</p> <p>WEB (HTTP/HTTPS)</p> <p>CLI (Telnet, Console, SSHv1/v2)</p> <p>Firmware upgrade via console/web/TFTP</p> <p>Configuration Backup/Reload</p> <p>Dual Firmware</p> <p>LLDP</p> <p>Configuration Export/Import</p> <p>CDP Aware</p> <p>OAM (IEEE802.3ah)</p> <p>CFM (IEEE802.1ag)</p> <p>sFlow</p> |



No. d'article: 195716
Numéro de fabricant: ALL-SGI8104PM-BT

| | |
|------------------------------|---|
| | Telnet Client |
| Synchronization, IEEE1588 | Support IEEE1588v2 transparent clock |
| Other Features | DNS Client DHCP Relay DHCP Client DHCP Snooping DHCP Option 66 DHCP Option 67 DHCP Option 82 NTP/SNTP Client UPNP UDLD |
| PoE management | Total PoE power budget control Per port PoE function enable/disable PoE admin-mode control PoE port power feeding priority Per PoE port power limitation PD classification detection PD alive check PoE schedule Soft-reboot PoE Non-stop |
| Maintenance | Cable Diagnostics Ping SFP DDM (Digital Diagnostics Monitoring) Thermal protection |



No. d'article: 195716
Numéro de fabricant: ALL-SGI8104PM-BT

| | |
|--|--|
| | System log (Local and Remote) Memory and CPU Monitoring Tracert/ Tracert 6 |
|--|--|

Layer 3 functions

| | |
|----------------|--|
| Static Routing | IPv4 Unicast: Static Routing (Software Base) IPv6 Unicast: Static Routing (Software Base) |
| IPV6 | IPv6 neighbor discovery (ND) Path maximum transmission unit (MTU) discovery Internet Control Message Protocol (ICMP) version 6 TCPv6/UDPv6 Ping6 Telnet(v6) Http/Https Interface IPV6 ACL IPV6 |

Attributs

| Attribut | Valeur |
|-----------------------|----------------|
| Anzahl Ports PoE/LAN: | 4/0 |
| Belüftung Switch: | Lüfterlos |
| Einsatzort Switch: | Industrial DIN |
| LAN Geschwindigkeit: | 1Gbit/s |
| Management: | full managed |
| PoE Budget: | <500 Watt |
| PoE Port Leistung: | 90W BT |
| SFP Geschwindigkeit: | SFP 1GBit |
| Poids: | 1 Kg |



No. d'article: 195716
Numéro de fabricant: ALL-SGI8104PM-BT

| Attribut | Valeur |
|-----------|------------|
| Garantie: | 24.00 Mois |

Accessoires

| No. d'article | Désignation |
|---------------|--|
| 128033 | ALLNET Switch Modul ALL4750-INDU SFP(Mini-GBIC), 1000Mbit MM |
| 128034 | ALLNET Module de commutation ALL4751-INDU SFP(M-GBIC), 1G SM |
| 134034 | ALLNET ALL-B100-24VDC / Power-Booster 24VDC to 48~55VDC 90W |
| 140523 | Mean Well power supply - 48V 75W DIN rail, narrow |
| 140523 | Mean Well power supply - 48V 75W DIN rail, narrow |
| 140522 | Mean Well power supply - 48V 120W DIN rail, narrow |
| 131244 | Mean Well Alimentation électrique du puits moyen - 48V 240W |
| 146994 | Mean Well Power Supply - 48V 480W DIN Rail |
| 140955 | TP(RJ45) POE-Tester, at/af, Endspan/Midspan, standard, Synergy 21, |
| 200364 | ALLNET 19"zbh. Gerätehalter für Hutschiene/DIN-Rail Geräte, T150mm/5HE, Lichtgrau, Frontmontage, |
| 193038 | ALLNET DIN-RAIL Wandgehäuse, T223mm, Lichtgrau, IP55, SO-DIN-Serie, |
| 193039 | ALLNET 19"Wandgehäuse, 6HE, T488mm, Lichtgrau, IP55, SO-Serie, incl. 2-Fach Lüftereinheit |
| 193040 | ALLNET 19"Wandgehäuse, 9HE, T488mm, Lichtgrau, IP55, SO-Serie, incl. 2-Fach Lüftereinheit |
| 193041 | ALLNET 19"Wandgehäuse, 12HE, T488mm, Lichtgrau, IP55, SO-Serie, incl. 2-Fach Lüftereinheit |

[Cliquez ici pour découvrir d'autres articles de cette catégorie dans notre boutique.](#)