

ALLNET Switch full managed industrial 12 Port Gigabit 240W /

>>> [Go to the shop article](#)



EAN CODE



ALLNET Switch full managed industrial 12 Port Gigabit 240W / 8x PoE+ / 4x SFP / Fanless / DIN / "ALL-SGI8112PM"

Highlights:

- 8-Gigabit ports with PoE AF-AT support up to 30Watt per port
- 4x SFP ports for fiber Gbics e.g. ALL4750-INDU / ALL4751-INDU etc.
- PoE Ports 1-8 max. PoE IEEE802.3at 30W
- Layer2+ features like 802.1Q VLAN, Port Isolation IGMP, LLDP, PoE+ Management, IP source Guard, ACLs etc.
- Supports Spanning Tree STP (802.1D) and RSTP (802.1W) and MSTP (802.1s)
- Supports PoE management like PoE scheduling, PoE PD-alive, Port PoE Priority, Soft-Reboot PoE Non-Stop
- Supports G.8032 quick ring protocol. Self-healing <20ms
- Max. PoE budget = 240 watts
- Fanless metal housing with optimized heat dissipation
- Easy to use as a desktop, wall mount or DIN rail device
- Extended temperature range from -40°C ~ +75°C

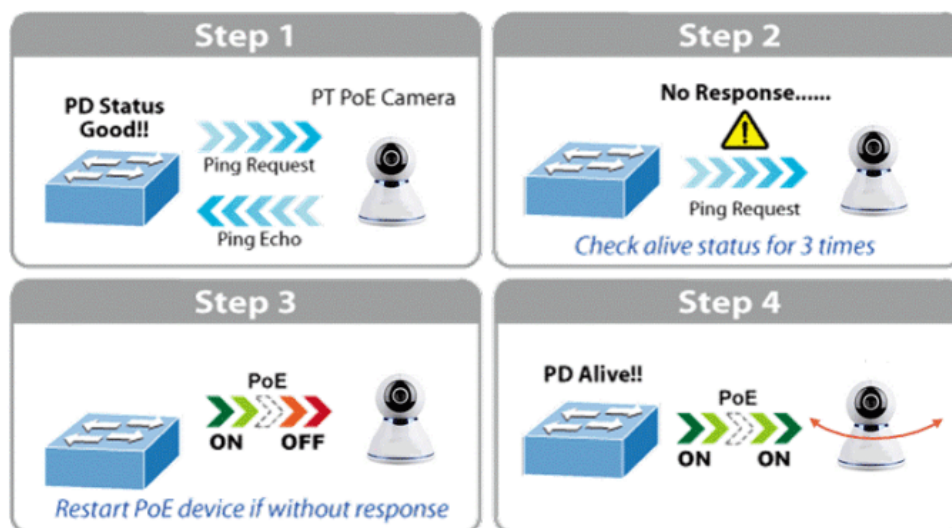
ALL-SGI8112PM Industrial Switch is a Layer 2+ managed Gigabit PoE Switch that features 8-Port Gigabit 802.3af/at PoE + 4-Port Gigabit SFP optical port, is specially designed to build a full Gigabit backbone to transmit reliable and high-speed data in heavy industrial demanding environments and forward data to remote network through fiber optic cabling. It comes with an IP40 rugged case and redundant power system. The industrial managed switch provides user-friendly but advanced IPv6/IPv4 management interfaces and Soft-reboot PoE Non-stop function. It is the best investment for expanding industrial business or upgrading its network infrastructure.

Features:

- Support L2+ Switching features including 802.1Q VLAN, Mirroring, Port isolation, IGMP Snooping, DHCP Snooping, LLDP, PoE+ management, IP Source Guard, ARP inspection, ACLs etc
- Support spanning tree STP(802.1D) and RSTP(802.1W) and MSTP(802.1s)
- Support enhanced management through WEB, CLI, TELNET, SSH, SNMP.
- Support cable diagnosis
- Dual firmware backup
- Support PoE management, like PoE schedule, PoE PD-alive, Port PoE Priority, Soft-Reboot PoE N on-stop
- Support G.8032 quick ring protocol. Self-recovery time <20ms
- Support IEEE1588 v2, transparent clock(TC)
- Support DDM, SFP digital diagnostics monitoring
- Support IPV4 and IPV6 static routing functions
- Support memory and CPU monitoring
- 6KV surge protection, 6KV contact/8KV air ESD protection

Intelligent PD–Alive Check for Frozen PDs

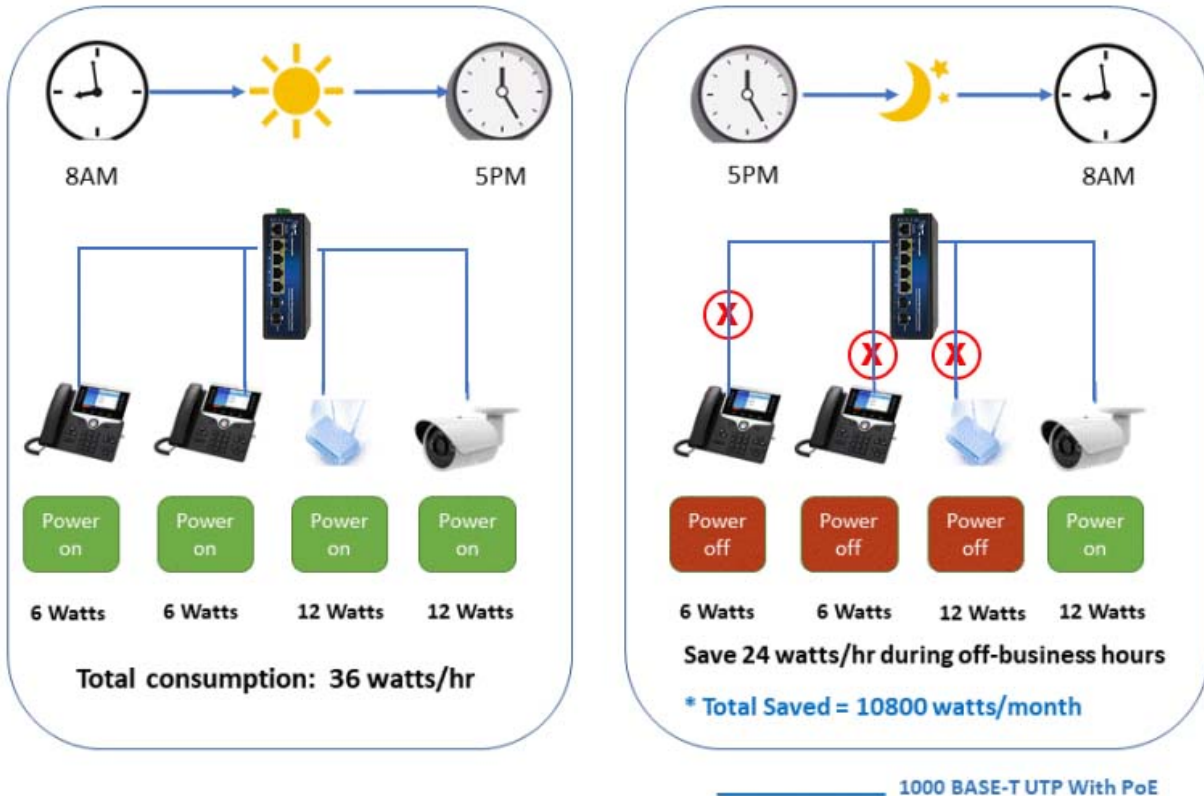
The ALL-SGI8112P Mindustrial PoE switch 8 ports can be configured to monitor connected PD's status in real time. Once the PD stops working and responding, the ALL-SGI8104v2PM will reboot the PoE port power and bring the PD back to work. It also greatly enhances the reliability in that the PoE port will reset the PD power, thus reducing administrator's management burden.



PoE Schedule Function for Energy Saving

For environmental protection purpose, the ALL-SGI8112PM switch Ethernet PoE can effectively control the power supply besides its capability of giving high watts power. The PoE schedule function helps to enable or disable

PoE power feeding for each PoE port during specified time intervals and it is a powerful function to help SMBs or enterprises save power and money.



Scheduled PD Re-starting

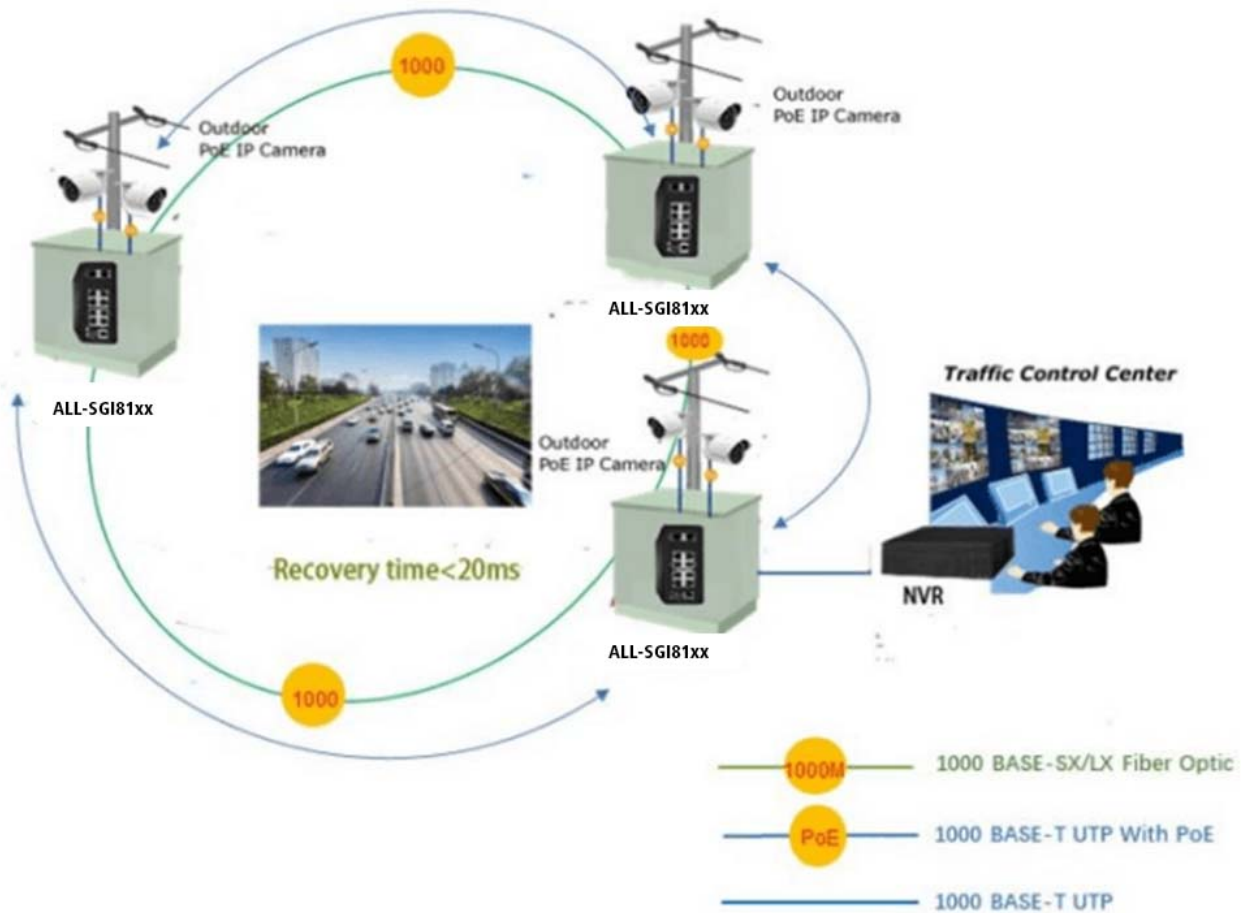
The ALL-SGI8112PM smart switch PoE allows each of the connected PoE IP cameras or PoE wireless access points to reboot at a specific time each week. Therefore, it will reduce the chance of IP camera or AP crash resulting from buffer overflow.



Fast Recovery Redundant Ring for Critical Network Applications

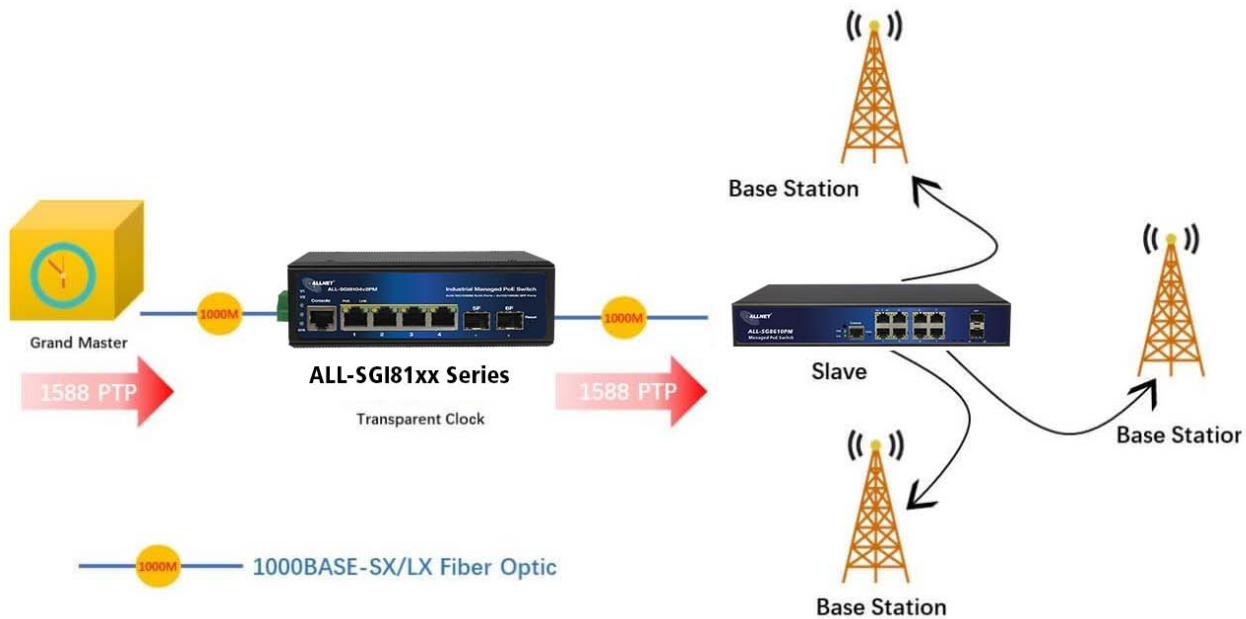
The ALL-SGI8112PM supports redundant ring technology and features strong, rapid self-recovery capability to prevent interruptions and external intrusions. It incorporates advanced ITU-T G.8032 ERPS technology, Spanning Tree Protocol (802.1s MSTP), and redundant power input system into customer's industrial automation network to enhance system reliability and uptime in harsh factory environments. In a certain simple Ring network, the recovery time of data link can be as fast as 20ms.

ERPS Ring for Video Transmission Redundancy



1588 Time Protocol for Industrial Computing Networks

The ALL-SGI8112PM is ideal for telecom and Carrier Ethernet applications, supporting MEF service delivery and timing over packet solutions for IEEE 1588 and synchronous Ethernet.



Strong Layer 2 Features

The ALL-SGI8112PM layer 2 Ethernet switch can be programmed for advanced Layer 2 switch management functions such as dynamic port link aggregation, 802.1Q tagged VLAN, Q-in-Q VLAN, private VLAN, Multiple Spanning Tree Protocol (MSTP), QoS, bandwidth control, IGMP snooping and MLD snooping. Via the aggregation of supporting ports, the ALL-SGI8112PM allows the operation of a high-speed trunk group that comes with multiple ports and supports fail-over as well.

Efficient and Various Management Methods

For efficient management, the ALL-SGI8112PM is equipped with console, Web and SNMP management interfaces.

With the built-in Web-based management interface, it offers an easy-to-use, platform-independent management and configuration facility.

For text-based management, it can be accessed via Telnet and the console port.

Intelligent PoE Switch SFP DDM Function

The ALL-SGI8112PM supports SFP-DDM (digital diagnostic monitor) function that greatly helps network administrator to easily monitor real-time parameters of the SFP transceivers, such as optical output power, optical input power, temperature, laser bias current, and transceiver supply voltage.

Technical Details:

| Hardware Specification | |
|------------------------|--|
| | |



| | |
|-----------------------|--|
| Model | ALL-SGI8112PM |
| Copper Ports | 8-10/100/1000BASE-T RJ45 auto-sensing ports |
| Fiber Ports | 4-100/1000BASE-T SFP interfaces, supports 100/1000Mbps dual mode |
| PoE Ports | 8-802.3af/802.3at PoE Injector Ports |
| Console Ports | 1 x RS-232-to-RJ45 serial port (115200, 8, N, 1) |
| Switch Architecture | Store-and-Forward |
| Switch Fabric | 24Gbps/non-blocking |
| Throughput | 17.856Mpps@64 bytes |
| Address Table | 8K entries |
| Share Data Buffer | 4.1 Mb |
| Jumbo Frame | 9216 Bytes |
| SDRAM | 1Gb |
| Flash Memory | 128Mb |
| Flow Control | IEEE 802.3x pause frame for full-duplex ; Back pressure for half-duplex |
| Reset Button | >2 sec.: Factory default and reset |
| Power Supply | 48 ~ 57 VDC, 50/60Hz,Dual DC |
| Power consumption | without PoE ?12W |
| PoE Standards | IEEE 802.3af Power over Ethernet/PSE IEEE 802.3at Power over Ethernet Plus/PSE |
| PoE Power Supply Type | Per Port 52V DC, 300mA. Max. 15.4 watts (IEEE 802.3af) Per Port 52V DC, 600mA. Max. 30 watts (IEEE 802.3at) |
| LED Indicators | Power: Green Solid on--power work normal,off--power disconnected System:Green Blink--work normally, solid on--soft work abnormal, fast blink--soft upgrade PoE: Yellow Solid on--PoE work normally, Off--PoE doesn't work, Blink--PoE overload 10/100/1000T RJ45 Interfaces (Port 1 to Port 8): 1000 LNK/ACT (Green), Blink--port connected with data transmission; Solid on--port connected without data transmission |



| | |
|--------------------------|---|
| | 100/1000Mbps SFP Interfaces (Port 9 to Port 12): Green Blink- port connected with data transmission; Solid on- port connected without data transmission |
| EMC | Surge Immunity:6KV Per: IEC61000-4-5 ESD Protection: ESD Level 4 Per: IEC61000-4-2;EFT Level 4 Per: IEC61000-4-4 |
| Dimension | 165x123x53.5mm |
| Weight | 1.0kg |
| Working Temperature | -40°C to 75°C |
| Storage Temperature | -40°C to 80°C |
| MTBF | 50,000hrs |
| Layer 2 functions | |
| Port configuration | Auto-negotiation Flow Control Port Mirror: TX/RX/BOTH; Many-to-1 monitor CPU Mirror Traffic statistics |
| Link Aggregation | Static link aggregation LACP(Dynamic Trunk/Static Trunk) Algorith based on Source/Destination MAC Algorithm based on Source/Destination IP |
| MAC Table | Aging Time Static MAC address Dynamic MAC address management |
| VLAN | 4094 Active VLANs 4094 VID 802.1Q Tag VLAN Port VLAN Protocol VLAN MAC VLAN Voice VLAN 802.1ad Q-in-Q tunneling Private VLAN (Protected port) GARP/GVRP |
| ACL | 256ACLs L2, L3 e L4 |

| | |
|-------------------|--|
| | Time-based ACL IP ACL MAC ACL MAC-IP ACL User-Defined ACL ICMPv6 |
| Spanning tree | 802.1D Spanning Tree Protocol (STP) 802.1w Rapid Spanning Tree Protocol (RSTP) 802.1s Multiple Spanning Tree Protocol (MSTP) Loop Guard Root Guard TC-BPDU Guard BPDU Guard BPDU Filter |
| Ring Protection | <20ms G.8032 ERPS Ring Fast Ring |
| Multicast | 256 groups IGMP v1/v2/v3 Snooping, Fast Leave MLD Snooping Multicast VLAN IGMP filter MVR Multicast Routing |
| QOS | 8 mapping IDs to 8 level priority queues CoS port-based CoS 802.1p-based CoS DSCP-based Scheduling algorithms SP, WRR, SP+WRR Storm Control (Broadcast, Multicast, Unknown Unicast) Bandwidth control per port SWRR, DWRR for Scheduling Flow Redirect Precedence TOS Rate Limiting(Ingress/Egress) Stri Priority |
| Security Features | Port Security |



| | |
|---------------------------|--|
| | <p>MAC address filter</p> <p>ARP Association (Manual, ARP scanning, DHCP snooping) ARP Protection</p> <p>AAA DAI</p> <p>DoS (Denial of Service)</p> <p>Classification of packages based on: End.MAC, IP End, TCP / UDP Ports, Protocol Type;</p> <p>802.1x Authentication (port-based e MAC-based) TACACS/TACACS+ Authentication</p> <p>RADIUS Authentication DHCP Filter</p> <p>Guest VLAN SSLv2/SSLv3/TLSv1 SSHv1/SSHv2</p> <p>Restriction of WEB access based on: IP Address, And. MAC and Port; Port Isolation</p> <p>Loopback detection</p> |
| Management | <p>SNMP v1/v2c with Full Private MIBs RMON 4 groups</p> <p>WEB (HTTP/HTTPS)</p> <p>CLI (Telnet, Console, SSHv1/v2) Firmware upgrade via console/web/TFTP Configuration Backup/Reload</p> <p>Dual Firmware LLDP</p> <p>Configuration Export/Import CDP Aware</p> <p>OAM (IEEE802.3ah) CFM (IEEE802.1ag)</p> <p>sFlow</p> |
| Synchronization, IEEE1588 | <p>Support IEEE1588v2 transparent clock</p> |
| Other Features | <p>DNS Client</p> <p>DHCP Relay</p> <p>DHCP Client</p> <p>DHCP Snooping</p> <p>DHCP Option 66</p> |



| | |
|-------------------------|--|
| | <p>DHCP Option 67</p> <p>DHCP Option 82 NTP/SNTP</p> <p>Client UPNP</p> <p>UDLD</p> |
| PoE management | <p>Total PoE power budget control</p> <p>Per port PoE function enable/disable PoE admin-mode control</p> <p>PoE port power feeding priority Per PoE port power limitation PD classification detection</p> <p>PD alive check PoE schedule</p> <p>Soft-reboot PoE Non-stop</p> |
| Maintenance | <p>Cable Diagnostics Ping</p> <p>SFP DDM (Digital Diagnostics Monitoring) Thermal protection</p> <p>System log (Local and Remote) Memory and CPU Monitoring</p> |
| Layer3 functions | |
| Static Routing | <p>IPv4 Unicast: Static Routing(Software Base)</p> <p>IPv6 Unicast: Static Routing(Software Base)</p> |
| IPV6 | <p>IPv6 neighbor discovery (ND)</p> <p>Path maximum transmission unit (MTU)</p> <p>discovery Internet Control Message Protocol (ICMP) version 6 TCPv6/UDPv6</p> <p>Ping6</p> <p>Telnet(v6)</p> <p>Http/Https</p> <p>Interface</p> <p>IPV6</p> |



Part No.: 195715
Vendor Part No.: ALL-SGI8112PM

ACL IPV6

Attributes

| Attribute | Value |
|-----------------------|----------------|
| Anzahl Ports PoE/LAN: | 8/4 |
| Belüftung Switch: | Lüfterlos |
| Einsatzort Switch: | Industrial DIN |
| LAN Geschwindigkeit: | 1Gbit/s |
| Management: | full managed |
| PoE Budget: | <300 Watt |
| PoE Port Leistung: | 30W at |
| SFP Geschwindigkeit: | SFP 1GBit |
| Weight: | 0.5 Kg |
| Warranty: | 36.00 Months |

Accessories

| Part No. | Name |
|----------|--|
| 128033 | ALLNET Switch Modul ALL4750-INDU SFP(Mini-GBIC), 1000Mbit MM |
| 128034 | ALLNET Switch Module ALL4751-INDU SFP(Mini-GBIC), 1000Mbit, |
| 140675 | ALLNET Switch Module ALL4765 SFP(Mini-GBIC), 1000Mbit |
| 134034 | ALLNET ALL-B100-24VDC / Power-Booster 24VDC to 48~55VDC 90W |
| 167158 | Synergy 21 Netzteil - 48V 120W Mean Well Hutschiene |
| 131244 | Mean Well power supply - 48V 240W DIN rail |
| 146994 | Mean Well Power Supply - 48V 480W DIN Rail |
| 174789 | Synergy 21 Netzteil - 48V 480W Mean Well Hutschiene parallel Funktion |
| 146996 | Mean Well Power Supply - 48V 960W DIN Rail |
| 140955 | TP(RJ45) POE-Tester, at/af, Endspan/Midspan, standard, Synergy 21, |
| 200364 | ALLNET 19"zbh. Gerätehalter für Hutschiene/DIN-Rail Geräte, T150mm/5HE, Lichtgrau, Frontmontage, |
| 193039 | ALLNET 19"Wandgehäuse, 6HE, T488mm, Lichtgrau, IP55, SO-Serie, incl. 2-Fach |



Part No.: 195715
Vendor Part No.: ALL-SGI8112PM

| Part No. | Name |
|----------|--|
| | Lüftereinheit |
| 193040 | ALLNET 19"Wandgehäuse, 9HE, T488mm, Lichtgrau, IP55, SO-Serie, incl. 2-Fach Lüftereinheit |
| 193041 | ALLNET 19"Wandgehäuse, 12HE, T488mm, Lichtgrau, IP55, SO-Serie, incl. 2-Fach Lüftereinheit |

[Click here to discover more items from this category in our shop.](#)